

APP CRS	Rwy Idg	<b>3849</b>
<b>045°</b>	TDZE	<b>281</b>
	Apt Elev	<b>288</b>

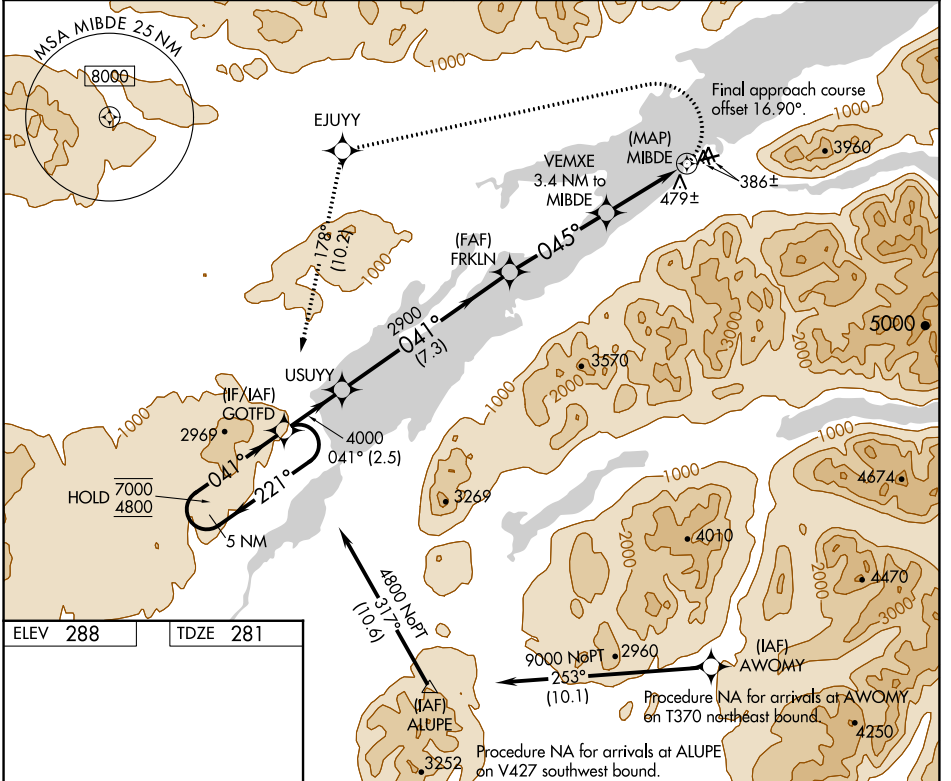
# RNAV (GPS) RWY 6R

WILDER RUNWAY (Ø5K)(PAKX)

RNP APCH - GPS.
Procedure NA at night. Rwy 6R helicopter visibility reduction below 1 SM NA. Circling NA south of Rwy 6R-24L.

MISSED APPROACH: Climbing left turn to 4800 direct EJUY and on track 178° to GOTFD and hold, continue climb-in-hold to 4800.

AWOS-3P <b>118.025</b>	ANCHORAGE CENTER <b>118.8 351.8</b>	CTAF <b>122.9</b>
---------------------------	--	----------------------



ELEV 288	TDZE 281

5 NM Holding Pattern	GOTFD	Visual Segment - Obstacles.	4800	EJUY	GOTFD
				tr 178°	
7000 ← 221°	USUY				
4800 041° →					
	4000	FRKLN	VEMXE 3.4 NM to MIBDE	MIBDE	
		2900	045°	1580	
	← 2.5 NM	← 7.3 NM	← 4.1 NM	← 3.4 NM	← 0.5 NM
CATEGORY	A	B	C	D	
LNAV MDA	860-1	579 (600-1)		NA	
CIRCLING	1280-1¼ 992 (1000-1¼)	1980-1½ 1692 (1700-1½)		NA	

AK, 11 JUL 2024 to 05 SEP 2024

AK, 11 JUL 2024 to 05 SEP 2024