

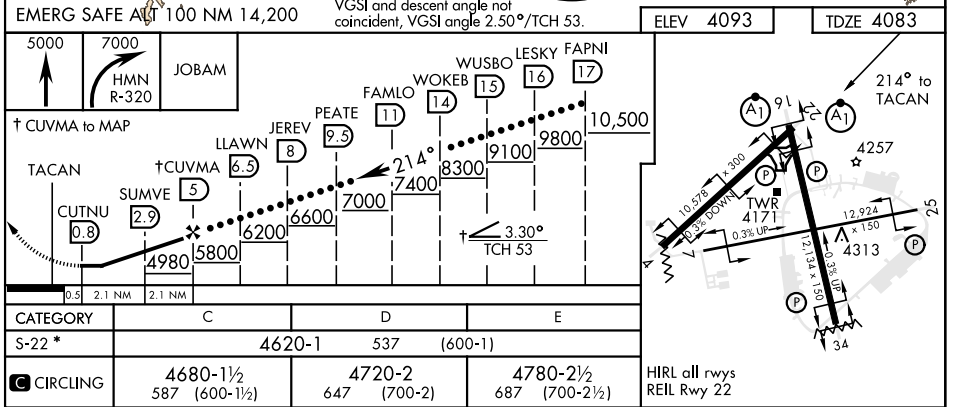
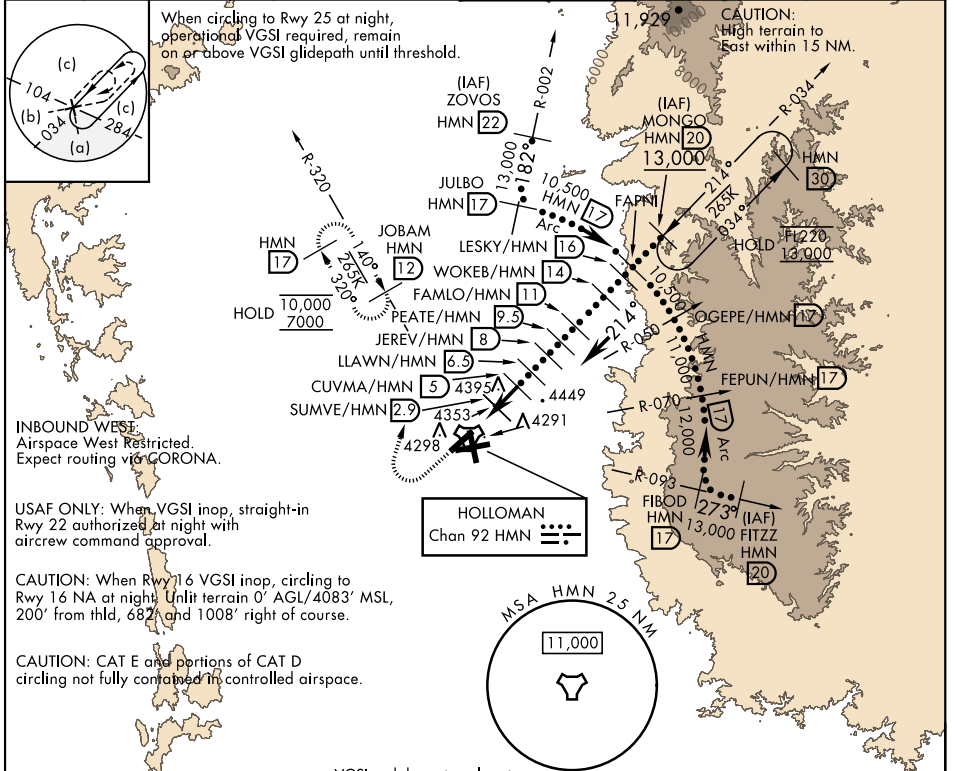
HI-TACAN RWY 22

TACAN HMN Chan 92	APCH CRS 214°	Rwy ldg 10,578 TDZE 4083 Arpt Elev 4093	AL-7 [USAF]	HOLLOMAN AFB (KHMN)
-----------------------------	-------------------------	--	-------------	---------------------

▼ *When ALS inop, increase CAT CDE vis to 1½ miles.
When VGSI inop, procedure NA at night.

ALSF-1 MISSED APPROACH: Climb straight ahead to 7000, passing 5000 turn right and intercept HMN TACAN R-320 outbound to JOBAM and hold.

ATIS ★ 273.5	ALBUQUERQUE CENTER 132.65 257.6	APP CON 120.6 269.225	TOWER ★ 119.3 254.4	GND CON 127.05 275.8	CLNC DEL 126.7 289.4
------------------------	---	---------------------------------	-------------------------------	--------------------------------	--------------------------------



HI-TACAN RWY 22

SW-1, 08 AUG 2024 to 05 SEP 2024

SW-1, 08 AUG 2024 to 05 SEP 2024