

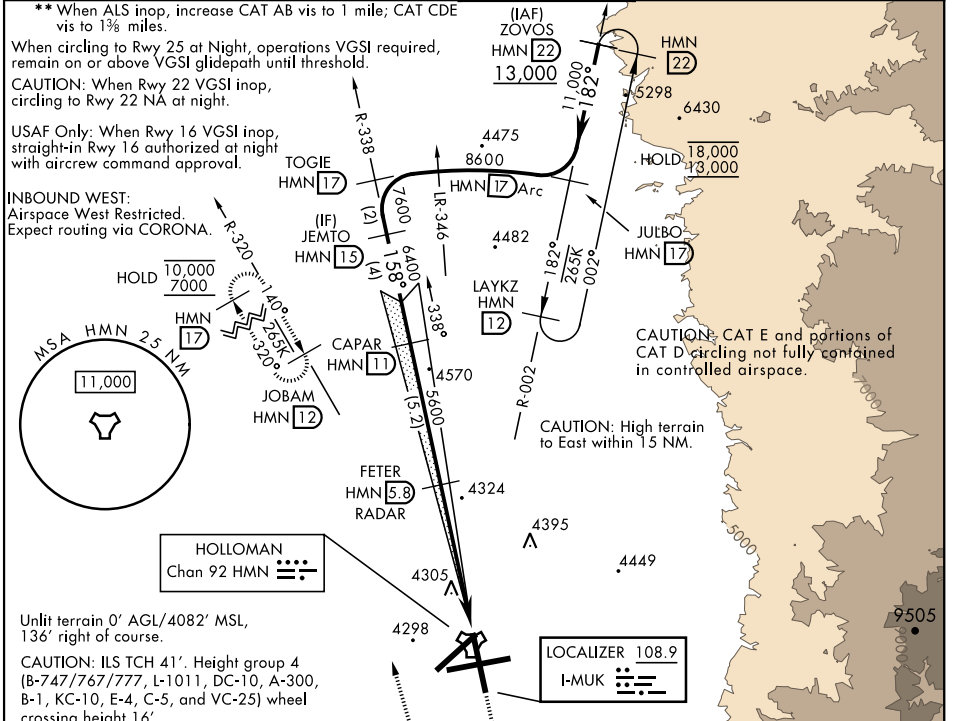
ALAMOGORDO, NEW MEXICO

ILS or LOC X RWY 16

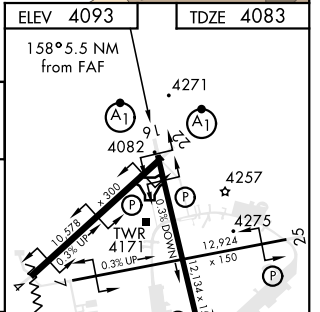
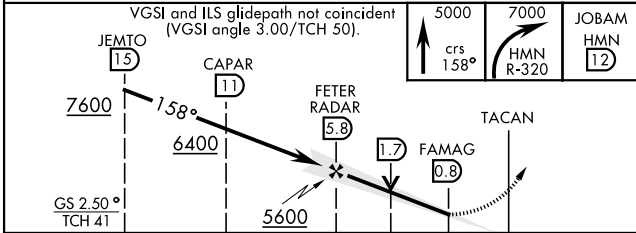
LOC I-MUK 108.9	APCH CRS 158°	Rwy ldg 12,134 TDZE 4083 Arpt Elev 4093	AL-7 [USAF]	HOLLOMAN AFB (KHMM)
---------------------------	-------------------------	--	-------------	---------------------

RADAR or DME required.		ALSIF-1 	MISSED APPROACH: Climb straight ahead to 7000, passing 5000 turn right and intercept HMN R-320 outbound to JOBAM and hold.		
* When ALS inop, increase vis to 3/4 miles.					

ATIS * 273.5	ALBUQUERQUE CENTER 132.65 257.6	APP CON 120.6 269.225	TOWER * 119.3 254.4	GND CON 127.05 275.8	CLNC DEL 126.7 289.4
------------------------	---	---------------------------------	-------------------------------	--------------------------------	--------------------------------



EMERG SAFE ALT 100 NM 14,200	ELEV 4093	TDZE 4083
------------------------------	-----------	-----------



CATEGORY	A	B	C	D	E
S-ILS 16*	4283-1/2		200	(200-1/2)	
S-LOC 16**	4640-1/2 517 (600-1/2)		4600-1	517	(600-1)
CIRCLING	4640-1 547 (600-1)		4680-1 1/2 587 (600-1 1/2)	4740-2 647 (700-2)	4780-2 1/2 687 (700-2 1/2)

HIRL all rwys REIL Rwy 22	FAF to MAP 5.0 NM				
Knots	60	90	120	150	180
Min:Sec	5:00	3:20	2:30	2:00	1:40

ALAMOGORDO, NEW MEXICO 32° 52'N-106° 06'W HOLLOMAN AFB (KHMM)

Amtd 4 11AUG22

ILS or LOC X RWY 16

SW-1, 08 AUG 2024 to 05 SEP 2024

SW-1, 08 AUG 2024 to 05 SEP 2024