

OHDEE ONE DEPARTURE

AL-7 [USAF]

HOLLOMAN AFB (KHMN)
ALAMOGORDO, NEW MEXICO

ATIS ★ 273.5
 CLNC DEL 126.7 289.4
 GND CON 127.05 275.8
 TOWER ★ 119.3 254.4
 DEP CON 128.1 284.0
 ALBUQUERQUE CENTER 132.65 257.6

RADAR required

Rwy	Knots	60	120	180	240	300	360
04 (a)	V/V(fpm)	477	954	1431	1908	2385	2862
16 (b)	V/V(fpm)	501	1002	1503	2004	2505	3006
34 (c)	V/V(fpm)	458	916	1374	1832	2290	2748

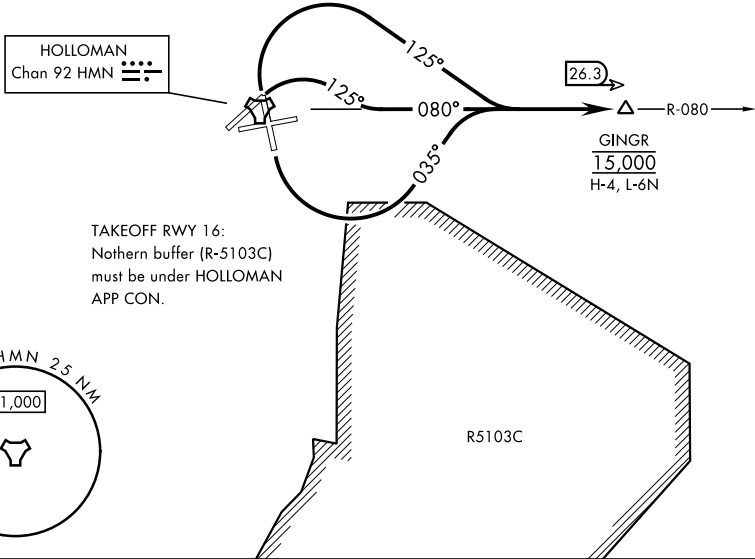
Minimum Climb Rate

11,929

(a) to 11,500

(b) to 12,000

MILITARY USE ONLY



TAKEOFF RWY 16:
 Northern buffer (R-5103C)
 must be under HOLLOWAN
 APP CON.

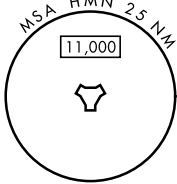
HOLLOWAN
 Chan 92 HMN

26.3

R-080

GINGR
 15,000
 H-4, L-6N

R5103C



DEPARTURE ROUTE DESCRIPTION

TAKEOFF RWY 4: Climbing right turn to track 125°, intercept HMN R-080 to GINGR.
 Cross GINGR at 15,000.

TAKEOFF RWY 16: Climbing left turn to track 035°, intercept HMN R-080 to GINGR.
 Cross GINGR at 15,000.

TAKEOFF RWY 34: Climbing right turn to track 125°, intercept HMN R-080 to GINGR.
 Cross GINGR at 15,000.

OHDEE ONE DEPARTURE

Amdt1 10AUG23

ALAMOGORDO, NEW MEXICO
HOLLOMAN AFB (KHMN)

SW-1, 08 AUG 2024 to 05 SEP 2024

SW-1, 08 AUG 2024 to 05 SEP 2024