

VOR/DME AST <b>114.0</b> Chan <b>87</b>	APP CRS <b>070°</b>	Rwy Idg TDZE Apt Elev	<b>4894</b> <b>14</b> <b>14</b>
---	------------------------	-----------------------------	---------------------------------------

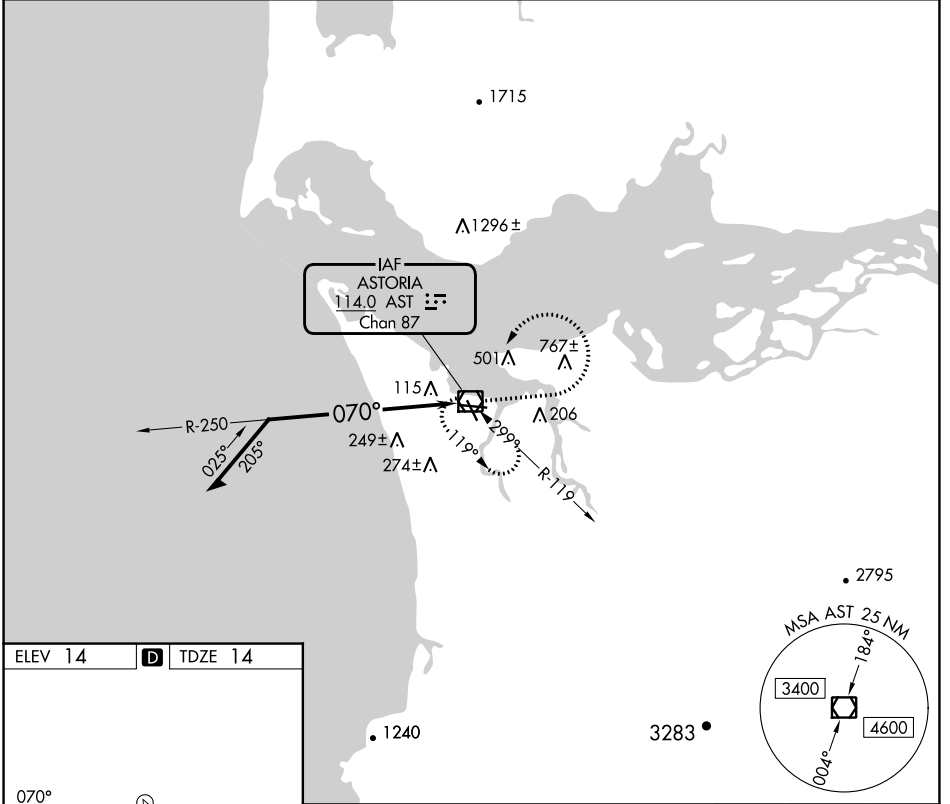
# VOR RWY 8

ASTORIA RGNL (AST)

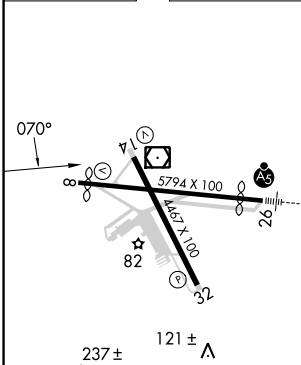
**⚠** Rwy 8 helicopter visibility reduction below 3/4 SM NA.

**MISSED APPROACH:** Climb to 1300 then climbing left turn to 4800 in AST VOR/DME holding pattern, continue climb-in-hold to 4800.

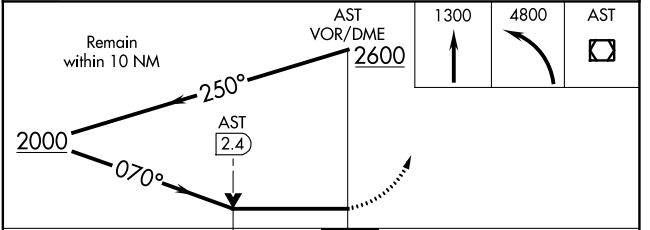
ASOS <b>135.375</b>	SEATTLE CENTER <b>124.2 317.6</b>	UNICOM <b>122.8 (CTAF) 0</b>
------------------------	--------------------------------------	---------------------------------



ELEV 14	<b>D</b>	TDZE 14
---------	----------	---------



REIL Rwy 8 **0**  
 REIL Rwy 14  
 MRL Rlys 8-26 and 14-32 **0**



CATEGORY	A	B	C	D
S-8	720-1	706 (800-1)	720-2	706 (800-2)
<b>C</b> CIRCLING	720-1 706 (800-1)	800-1 786 (800-1)	1080-3 1066 (1100-3)	1160-3 1146 (1200-3)

NW-1, 08 AUG 2024 to 05 SEP 2024

NW-1, 08 AUG 2024 to 05 SEP 2024