

VOR/DME BKE 115.3 Chan 100	APP CRS 135°	Rwy Idg TDZE Apt Elev 3373	N/A N/A 3373
--	------------------------	--------------------------------------	---

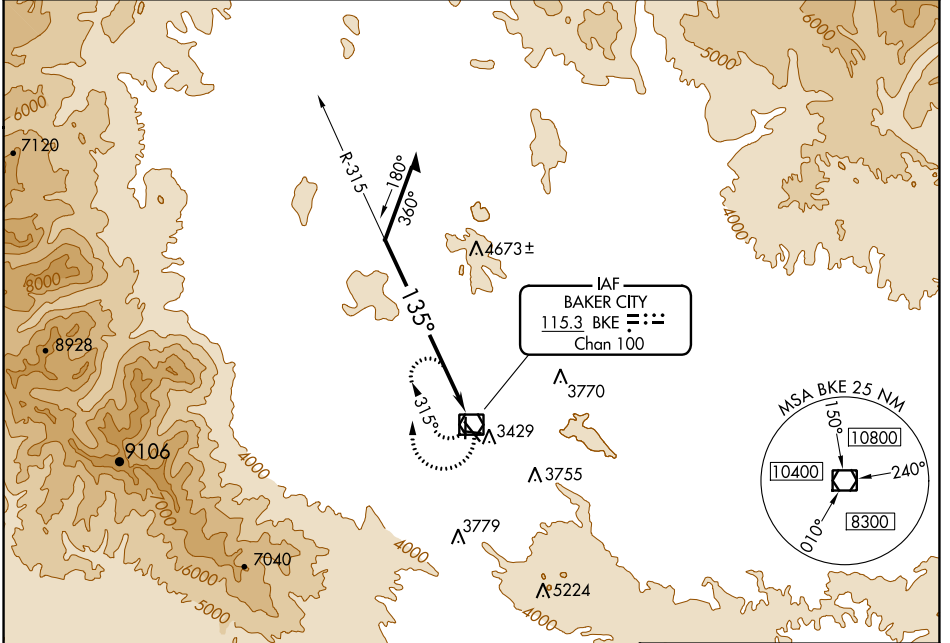
VOR-A

BAKER CITY MUNI (BKE)

⚠ Circling to Rwy 8/17/26/35 NA at night. Helicopter visibility reduction below 1 SM NA.

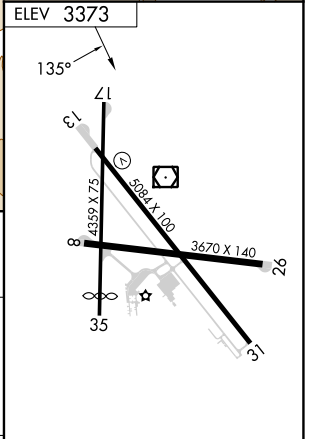
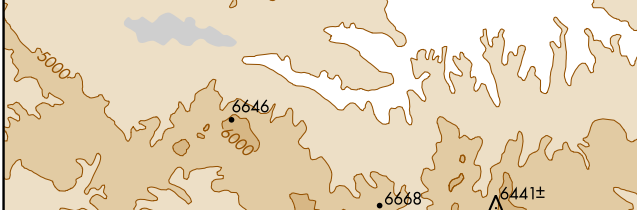
⚠ MISSED APPROACH: Climbing right turn to 6900 in BKE VOR/DME holding pattern.

ASOS 134.275	SALT LAKE CENTER 128.05 306.95	UNICOM 123.0 (CTAF) 0
------------------------	--	---------------------------------



NW-1, 08 AUG 2024 to 05 SEP 2024

NW-1, 08 AUG 2024 to 05 SEP 2024



Remain within 10 NM	BKE VOR/DME	6900	BKE
6700	315°	135°	

CATEGORY	A	B	C	D
C CIRCLING	5200-1¼ 1827 (1900-1¼)	5200-1½ 1827 (1900-1½)	5200-3	1827 (1900-3)

REIL Rwys 13 and 31 **0**
MIRL Rwy 13-31 **0**