

DIXEE THREE ARRIVAL (RNAV)

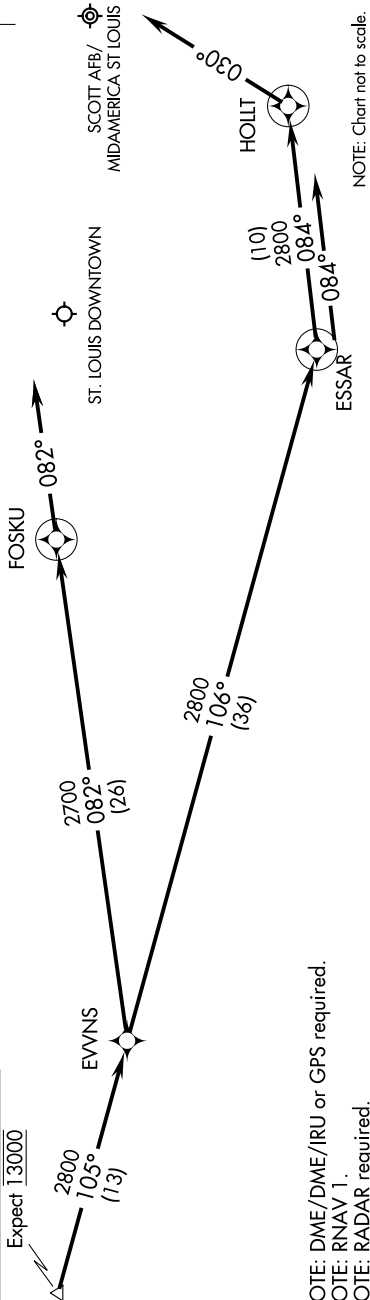
BELLEVILLE, ILLINOIS

EC-3, 08 AUG 2024 to 05 SEP 2024

ST LOUIS APP CON
 128.1 307.05
 BLV/KBLV ATIS *
 128.7 256.7
 CFS ATIS
 121.45

DIXEE
VERTICAL NAVIGATION
PLANNING INFORMATION

Expect 13000



SCOTT AFB/
 MIDAMERICA ST LOUIS

ST. LOUIS DOWNTOWN

NOTE: Chart not to scale.

NOTE: DME/DME/IRU or GPS required.
 NOTE: RNAV 1.
 NOTE: RADAR required.

ARRIVAL ROUTE DESCRIPTION

ST. LOUIS DOWNTOWN:

LANDING RWY 12R: From DIXEE on track 105° to EVNS, then on track 082° to FOSKU. Expect radar vector prior to FOSKU. If no heading received, track 082°.

LANDING RWY 30L/R: From DIXEE on track 105° to EVNS, then on track 106° to ESSAR, then on track 084° to HOLLT. Expect radar vector prior to HOLLT. If no heading received, track 030°.

SCOTT AFB/MIDAMERICA ST LOUIS:

LANDING RWYS 14L/R, 32L/R: From DIXEE on track 105° to EVNS, then on track 106° to ESSAR. Expect radar vector prior to ESSAR. If no heading received, track 084°.

DIXEE THREE ARRIVAL (RNAV)

BELLEVILLE, ILLINOIS

EC-3, 08 AUG 2024 to 05 SEP 2024