

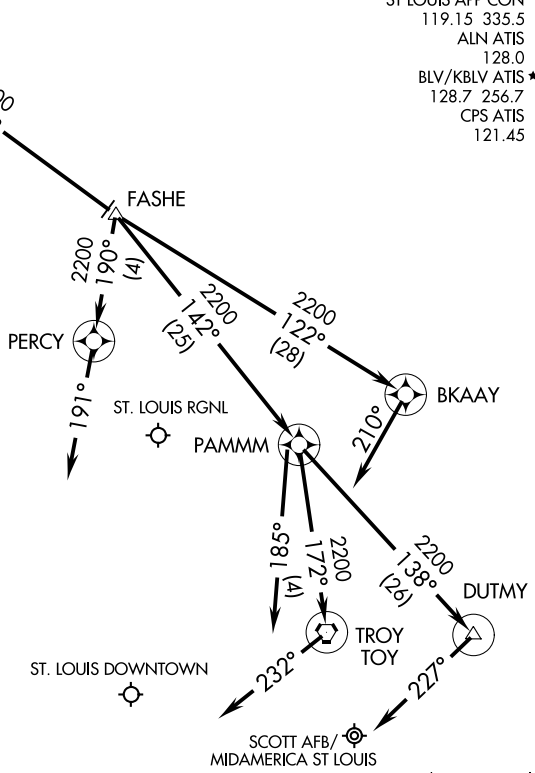
# FARMR THREE ARRIVAL (RNAV)

AL-46 (FAA)

BELLEVILLE, ILLINOIS

**FARMR**  
**VERTICAL NAVIGATION**  
**PLANNING INFORMATION**  
Expect 13000

ST LOUIS APP CON  
119.15 335.5  
ALN ATIS  
128.0  
BLV/KBLV ATIS ★  
128.7 256.7  
CPS ATIS  
121.45



NOTE: DME/DME/IRU or GPS required.  
NOTE: RNAV 1.  
NOTE: RADAR required.

NOTE: Chart not to scale.

## ARRIVAL DESCRIPTION

### ST. LOUIS DOWNTOWN:

**LANDING RWY 12R, 30L/R:** From FARMR on track 126° to FASHE, then on track 142° to PAMMM. Expect radar vector prior to PAMMM. If no heading received, track 185°.

### SCOTT AFB/MIDAMERICA ST LOUIS:

**LANDING RWYS 14L/R:** From FARMR on track 126° to FASHE, then on track 142° to PAMMM, then on track 172° to TOY VORTAC. Expect RADAR vector prior to TOY VORTAC. If no heading received, track 232°.

**LANDING RWYS 32L/R:** From FARMR on track 126° to FASHE, then on track 142° to PAMMM, then on track 138° to DUTMY. Expect radar vector prior to DUTMY. If no heading received, track 227°.

### ST. LOUIS RGNL:

**LANDING RWY 11:** From FARMR on track 126° to FASHE, then on track 190° to PERCY. Expect radar vector prior to PERCY. If no heading received, track 191°.

**LANDING RWY 29:** From FARMR on track 126° to FASHE, then on track 122° to BKAAY. Expect radar vector prior to BKAAY. If no heading received, track 210°.

# FARMR THREE ARRIVAL (RNAV)

BELLEVILLE, ILLINOIS