

WAAS CH <b>99418</b> <b>W35A</b>	APP CRS <b>355°</b>	Rwy Idg TDZE Apt Elev	<b>8803</b> <b>2563</b> <b>2573</b>
--	------------------------	-----------------------------	---

# RNAV (GPS) RWY 35

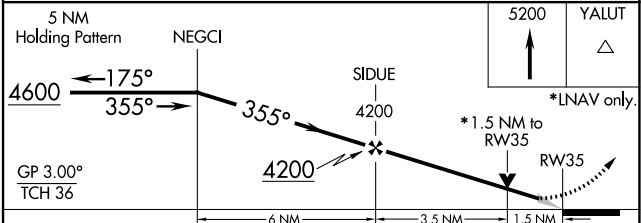
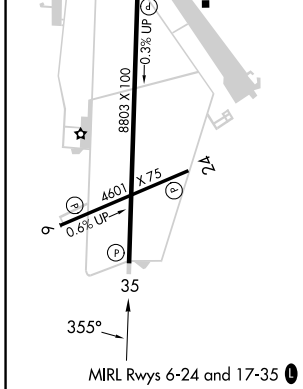
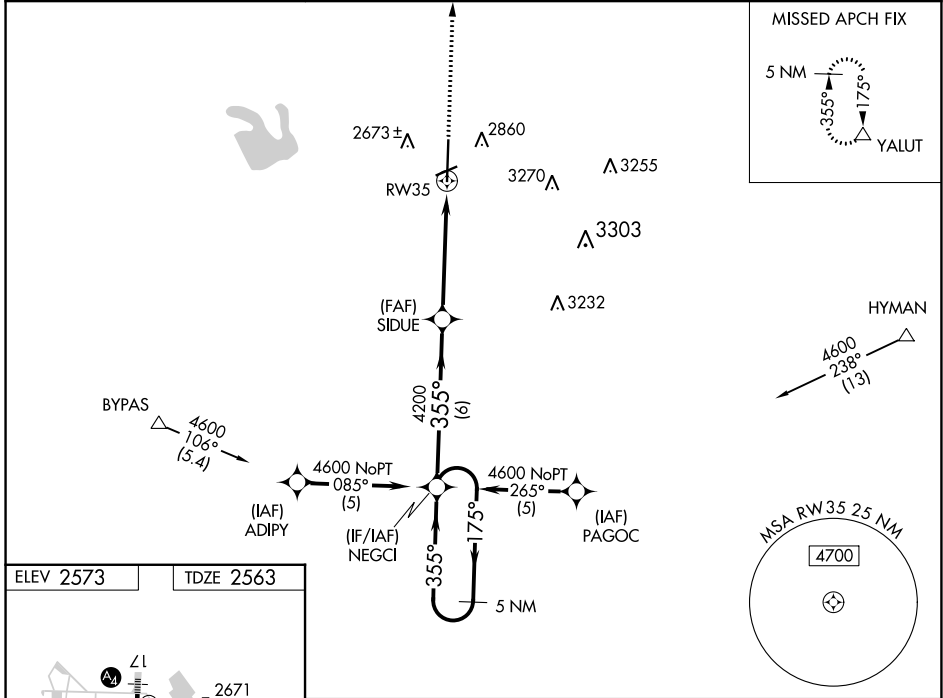
BIG SPRING McMAHON-WRINKLE (BPG)

**RNP APCH.**

**⚠** Baro-VNAV NA when using Midland Intl Air and Space Port altimeter setting. For uncompensated Baro-VNAV systems, LNAV/VNAV NA below -20°C or above 43°C. VDP NA with Midland Intl Air and Space Port altimeter setting. When local altimeter setting not received, use Midland Intl Air and Space Port altimeter setting: increase all DA 130 feet and all MDA 140 feet; increase LPV all Cats visibility ¼ SM, LNAV/VNAV all Cats visibility ½ SM and LNAV Cat C and D visibility ½ SM.

**MISSED APPROACH:** Climb to 5200 direct YALUT and hold.

AWOS-3PT <b>118.025</b>	FORT WORTH CENTER <b>133.7 350.2</b>	UNICOM <b>122.8 (CTAF) 0</b>
----------------------------	---	---------------------------------



CATEGORY	A	B	C	D
LPV DA	2813-1 250 (300-1)			
LNAV/VNAV DA	2979-1½ 416 (500-1½)			
LNAV MDA	3060-1 497 (500-1)	3060-1¼ 497 (500-1¼)	3060-1½ 497 (500-1½)	3060-1½ 497 (500-1½)

SC-2, 08 AUG 2024 to 05 SEP 2024

SC-2, 08 AUG 2024 to 05 SEP 2024