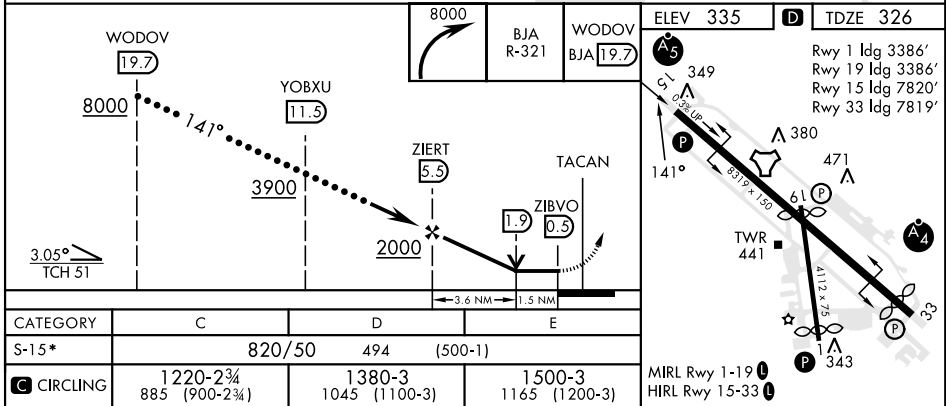
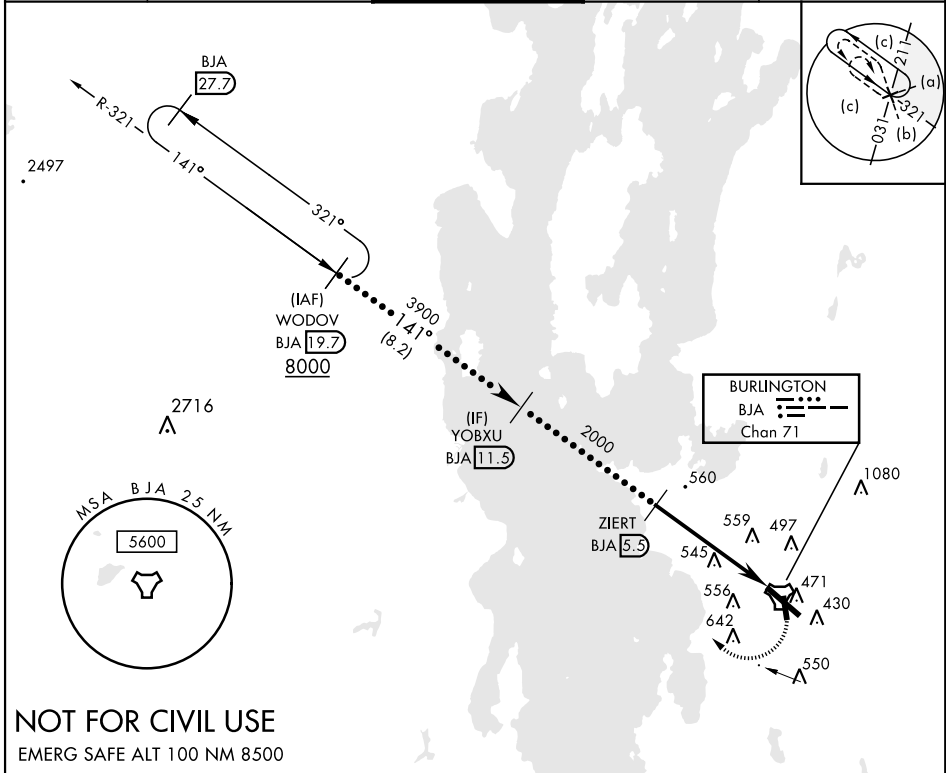


HI-TACAN RWY 15

TACAN BJA Chan 71	APCH CRS 141°	Rwy ldg TDZE 7820 326 Arprt Elev 335	AL-70 [USAF]	PATRICK LEAHY BURLINGTON INTL (KBTV)
<p>▼ * When ALS inop, increase CAT CDE vis to 1 3/8 mile.</p>			MALSRL A5	MISSED APPROACH: Climbing right turn to 8000 on BJA R-321 to WODOV / BJA 19.7 DME and hold, continue climb-in-hold to 8000.

ATIS 123.8 269.9	APP CON 121.1 278.8	TOWER ★ 118.3 (CTAF) 0257.8	GND CON 126.3 348.6	CLNC DEL 119.15
----------------------------	-------------------------------	---------------------------------------	-------------------------------	---------------------------



HI-TACAN RWY 15

NE-1, 08 AUG 2024 to 05 SEP 2024

NE-1, 08 AUG 2024 to 05 SEP 2024