

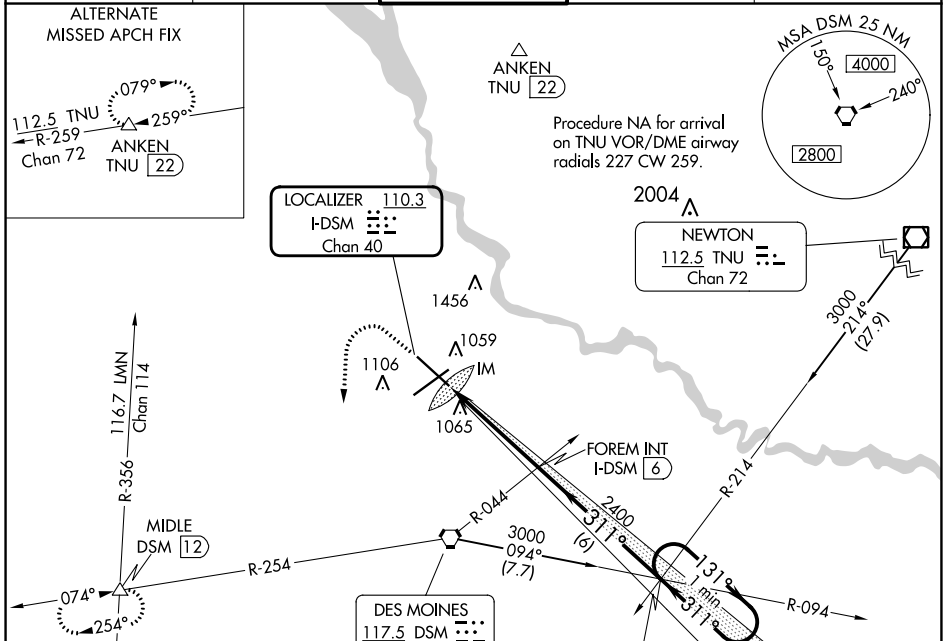
LOC/DME I-DSM <b>110.3</b> Chan <b>40</b>	APP CRS <b>311°</b>	Rwy ldg TDZE Apt Elev <b>9001</b> <b>958</b> <b>958</b>
---	------------------------	--

# ILS or LOC RWY 31

DES MOINES INTL (DSM)

For inop ALS, increase S-ILS 31 Cat E visibility to RVR 4000 and S-LOC 31 Cat E visibility to RVR 6000.	ALSF-2 	MISSED APPROACH: Climb to 1600 then climbing left turn to 3000 on heading 180° and on DSM VORTAC R-254 to MIDDLE INT/12 DME and hold.
---	------------	---

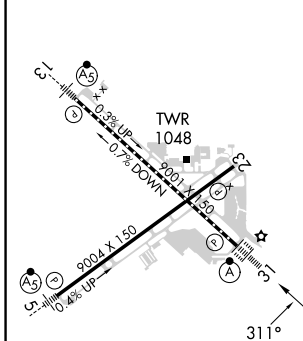
ATIS <b>119.55</b>	DES MOINES APP CON <b>123.9 307.15</b>	DES MOINES TOWER <b>118.3 257.8</b>	GND CON <b>121.9 348.6</b>	CLNC DEL <b>134.15 317.55</b>
-----------------------	---	--	-------------------------------	----------------------------------



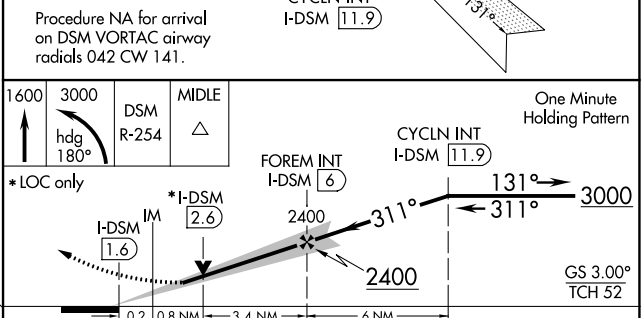
NC-3, 08 AUG 2024 to 05 SEP 2024

NC-3, 08 AUG 2024 to 05 SEP 2024

ELEV 958	<b>D</b>	TDZE 958
----------	----------	----------



REIL Rwy 5 and 23	TWR 1048
TDZ/CL Rwy 31	9001 X 150
HIRL Rwy 13-31 and 5-23	9004 X 150
FAF to MAP 4.4 NM	
Knots	60 90 120 150 180
Min:Sec	4:24 2:56 2:12 1:46 1:28



CATEGORY	A	B	C	D	E
S-ILS 31	1158/18 200 (200-½)				
S-LOC 31	1340/24	382 (400-½)	1340/35 382 (400-¾)		
<b>C</b> CIRCLING	1420-1	462 (500-1)	1600-1½	1760-2½	1760-2¾ 642 (700-1½) 802 (900-2½) 802 (900-2¾)