

FORT BLISS, TEXAS

VOR or TACAN RWY 22

BIGGS AAF (KBIF)

EWM VORTAC 112.4 Chan 71	APCH CRS 210°	Rwy Idg 13,554 TDZE 3947 Arprt Elev 3947
--	-------------------------	---

[USA]

* Circling CAT DE not authorized W of Rwy 4-22.



MISSED APPROACH: Climbing left turn to 8000 direct EWM VORTAC and hold, continue climb-in-hold to 8000. (TACAN only aircraft continue on EWM R-079 to PIERS INT/ EWM 9.8 DME and hold, continue climb-in-hold to 9000).

ATIS 120.0 254.3	EL PASO APP CON S of V16 119.15 353.5 N of V16 124.25 298.85	TOWER 127.9 342.25	GND CON 121.6 251.125	EL PASO CLNC DEL 125.0 379.1	ASR
----------------------------	--	------------------------------	---------------------------------	--	-----

Use El Paso Intl altimeter setting.

Inop table does not apply.

Arrivals expect RADAR vectors to final when restricted areas are active.

TACAN only equipped aft:

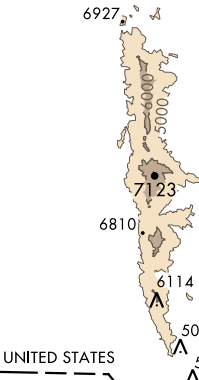
Final apch from holding pattern not authorized.

RADAR vectors required to final approach course.

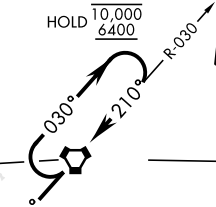
Procedure not authorized via V-560

eastbound without holding at PIERS.

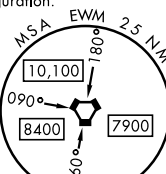
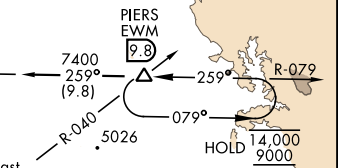
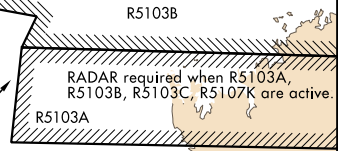
ATC clearance required.



IF/IAF
NEWMAN
112.4 EWM
Chan 71



CAUTION: El Paso Intl airport is 2.5 NM southeast with same runway configuration.

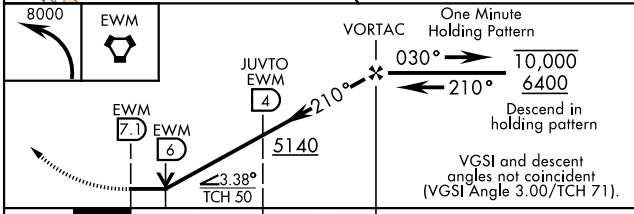


UNITED STATES
MEXICO

EL PASO INTL

EL PASO
115.2 ELP
Chan 99

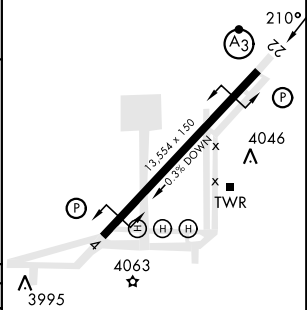
ELEV 3947	TDZE 3947
-----------	-----------



CATEGORY	A	B	C	D	E
S-22	5140-1¼	1193 (1200-1¼)			5140-3 1193(1200-3)

CIRCLING *	5140-1¼ 1193 (1200-1¼)	5140-1½ 1193 (1200-1½)	5140-3	1193	(1200-3)
------------	---------------------------	---------------------------	--------	------	----------

JUWTO FIX MINIMUMS					
S-22	4380-1	433 (500-1)	4380-1¼	433	(500-1¼)



HIRL Rwy 4-22
REIL Rwy 4 and 22

FAF to MAP 7.1 NM					
Knots	60	90	120	150	180
Min:Sec	7:06	4:44	3:33	2:50	2:22

FORT BLISS, TEXAS

31° 51' N-106° 23' W

BIGGS AAF (KBIF)

Amdt 9 05OCT23

VOR or TACAN RWY 22

SC-3, 08 AUG 2024 to 05 SEP 2024

SC-3, 08 AUG 2024 to 05 SEP 2024