

WAAS CH <b>86518</b> <b>W16B</b>	APP CRS <b>164°</b>	Rwy Idg TDZE <b>364</b> Apt Elev <b>374</b>	<b>8009</b> <b>364</b> <b>374</b>
--	------------------------	---	---

# RNAV (GPS) Y RWY 16R

MAHLON SWEET FLD (EUG)

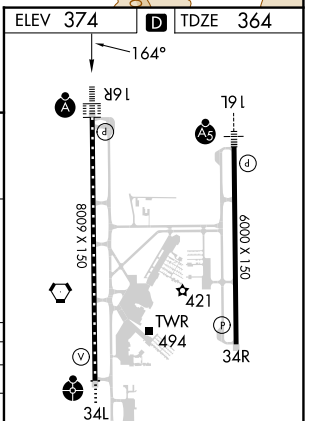
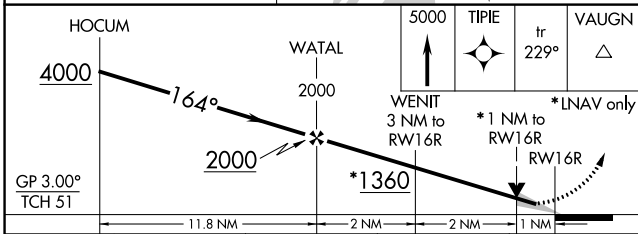
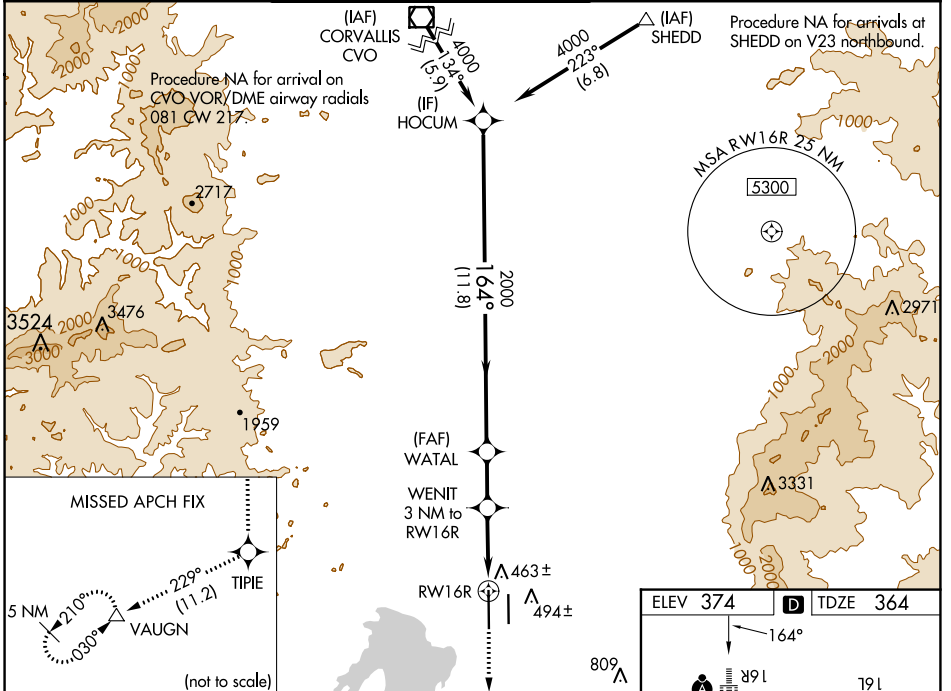
**RNP APCH.**

**⚠** Simultaneous approach authorized. LNAV procedure NA during simultaneous operations. Use of FD or AP providing RNAV track guidance required during simultaneous operations. For uncompensated Baro-VNAV systems, LNAV/VNAV NA below -10°C or above 54°C. For inop ALS, increase LNAV/VNAV all Cats visibility to RVR 4500, increase LNAV Cat C/D visibility to RVR 5500.

**ALS-2**

**MISSED APPROACH:** Climb to 5000 direct TIPIE and on track 229° to VAUGN and hold, continue climb-in-hold to 5000.

ATIS <b>125.225</b>	CASCADE APP CON ★ <b>119.6 348.7</b>	EUGENE TOWER ★ <b>118.9</b> (CTAF) <b>0 371.9</b> (Rwy 16R/34L) <b>124.15 371.9</b> (Rwy 16L/34R)	GND CON <b>121.7 269.5</b>	CLNC DEL <b>121.7 269.5</b>	UNICOM <b>122.95</b>
------------------------	---	---	-------------------------------	--------------------------------	-------------------------



CATEGORY	A	B	C	D
LPV DA		564/18	200 (200-½)	
LNAV/VNAV DA		628/24	264 (300-½)	
LNAV MDA	720/24	356 (400-½)	720/30	356 (400-¾)
<b>C</b> CIRCLING	820-1 446 (500-1)	840-1 466 (500-1)	1000-1¾ 626 (700-1¾)	1140-2½ 766 (800-2½)

TDZ/CL Rwy 16R  
REIL Rwy 34R  
HIRL Rwy 16L-34R and 16R-34L

NW-1, 08 AUG 2024 to 05 SEP 2024

NW-1, 08 AUG 2024 to 05 SEP 2024