

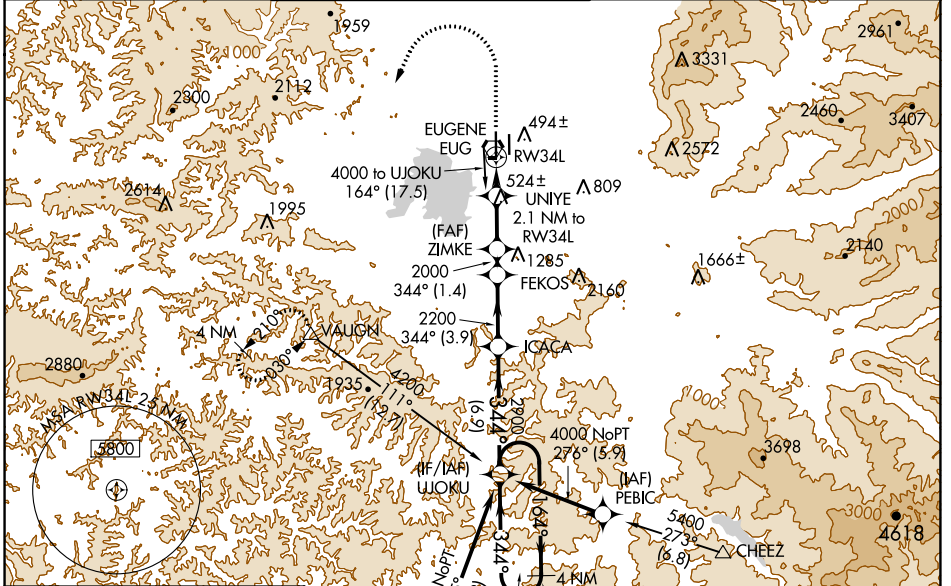
WAAS CH <b>45600</b> W <b>34A</b>	APP CRS <b>344°</b>	Rwy Idg TDZE Apt Elev	<b>8009</b> <b>368</b> <b>374</b>
---	------------------------	-----------------------------	---

# RNAV (GPS) Y RWY 34L

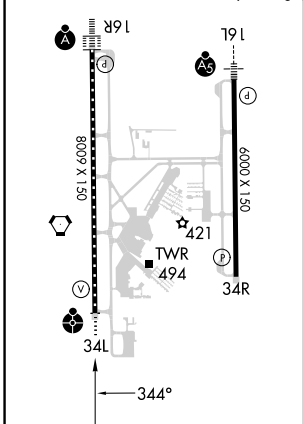
MAHLON SWEET FLD (EUG)

RNP APCH.		EUGENE TOWER *		GND CON		CLNC DEL		UNICOM	
<p>Simultaneous approach authorized. LNAV procedure NA during simultaneous operations. Use of FD or AP providing RNAV track guidance required during simultaneous operations. For uncompensated Baro-VNAV systems, LNAV/VNAV NA below -10°C or above 54°C. For inop ALS increase LNAV/VNAV visibility Cats A-B to RVR 4500. Inop table does not apply to LPV minimums.</p>		<p><b>118.9</b> (CTAF) <b>0 371.9</b> (Rwy 16R/34L) <b>124.15 371.9</b> (Rwy 16L/34R)</p>		<p><b>121.7 269.5</b></p>		<p><b>121.7 269.5</b></p>		<p><b>122.95</b></p>	

ATIS <b>125.225</b>	CASCADE APP CON * <b>119.6 348.7</b>	EUGENE TOWER * <b>118.9</b> (CTAF) <b>0 371.9</b> (Rwy 16R/34L) <b>124.15 371.9</b> (Rwy 16L/34R)	GND CON <b>121.7 269.5</b>	CLNC DEL <b>121.7 269.5</b>	UNICOM <b>122.95</b>
------------------------	---	---	-------------------------------	--------------------------------	-------------------------



ELEV 374	TDZE 368
HIRL Rwy 16L-34R and 16R-34L	
TDZ/CL Rwy 16R	
REIL Rwy 34R	



1500	4000	VAUGN	UJOKU 4 NM Holding Pattern			
*LNAV only		UNIYE 2.1 NM to RWY 34L	ZIMKE	FEKOS	ICACA	UJOKU
*1.1 NM to RWY 34L		2000	2200	2900	2900	6000
1080*		2000	344°		344°	
1.1 NM		1 NM	2.9 NM	1.4 NM	3.9 NM	6.9 NM
CATEGORY	A	B	C	D		
LPV DA	568/40		200 (200-3/4)			
LNAV/VNAV DA	657/40		289 (300-3/4)			
LNAV MDA	760/40		392 (400-3/4)		760/50 392 (400-1)	
CIRCLING	820-1 446 (500-1)		840-1 466 (500-1)		1000-1 3/4 626 (700-1 3/4) 1140-2 1/2 766 (800-2 1/2)	

NW-1, 08 AUG 2024 to 05 SEP 2024

NW-1, 08 AUG 2024 to 05 SEP 2024