

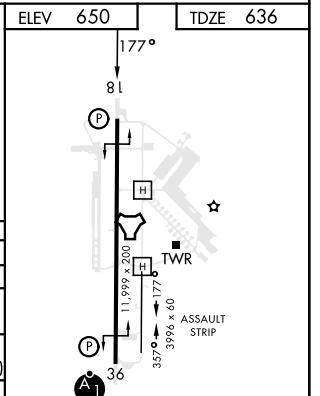
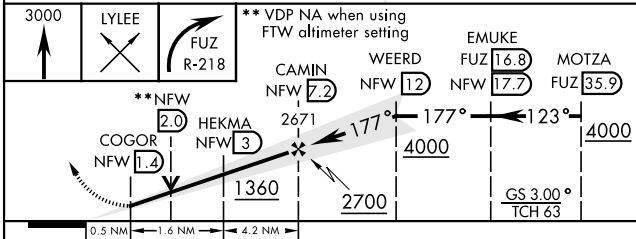
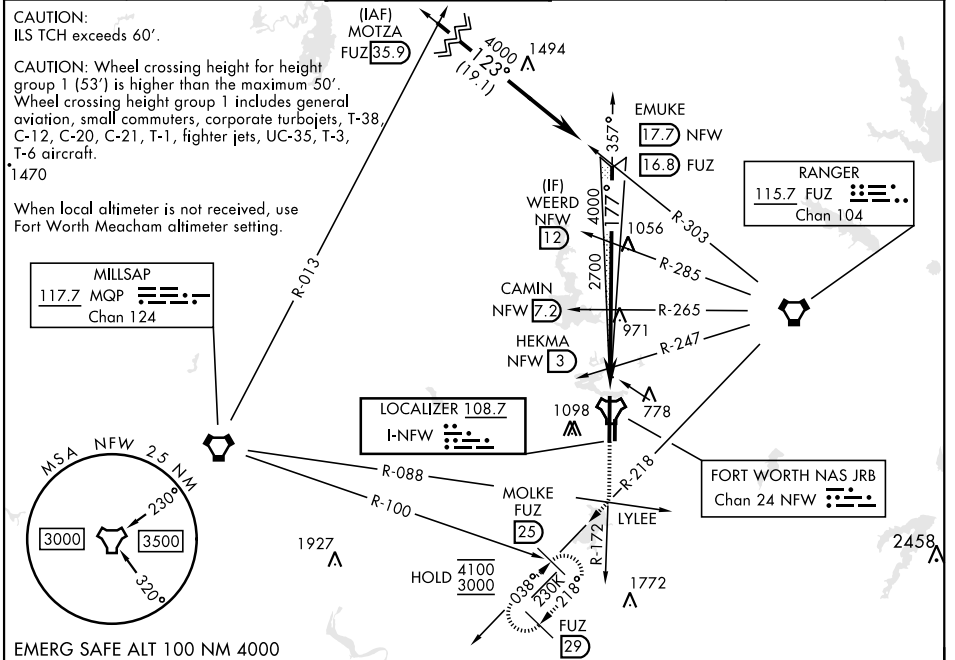
FORT WORTH, TEXAS

# ILS Z or LOC Z RWY 18

LOC I-NFW <b>108.7</b>	APCH CRS <b>177°</b>	Rwy Idg <b>11,999</b> TDZE <b>636</b> Arpt Elev <b>650</b>	[USN] FORT WORTH NAS JRB (CARSWELL FLD) (KNFW)
---------------------------	-------------------------	--	--

FUZ VORTAC or RADAR required
MISSED APPROACH: Climb to 3000 direct LYLEE to intercept FUZ VORTAC R-218 to MOLKE and hold.

ATIS★ <b>351.675</b>	REGIONAL APP CON <b>125.8 257.95</b>	NAVY FORT WORTH TOWER★ <b>120.950 269.325</b>	GND CON <b>121.675 279.575</b>	CLNC DEL <b>126.4 254.325</b>	ASR/PAR
-------------------------	---	--	-----------------------------------	----------------------------------	---------



CATEGORY	A	B	C	D	E
S-ILS 18	836-¾		200	(200-¾)	
S-LOC 18	1040-1	404 (400-1)	1040-1½	404	(400-1½)
<b>C</b> CIRCLING*	1220-1 570 (600-1)	1320-1 670 (700-1)	1320-1¾ 670 (700-1¾)	1340-2¼ 690 (700-2¼)	1440-2¾ 790 (800-2¾)
FORT WORTH MEACHAM ALTIMETER					
S-ILS 18	856-¾		220	(300-¾)	
S-LOC 18	1060-1	424 (500-1)	1060-1¼	424	(500-1¼)
<b>C</b> CIRCLING*	1240-1 590 (600-1)	1340-1 690 (700-1)	1340-2 690 (700-2)	1360-2¼ 710 (800-2¼)	1460-2¾ 810 (900-2¾)

HIRL Rwy 18-36	FAF to MAP 5.8 NM					
REIL Rwy 18	Knots	60	90	120	150	180
	Min:Sec	5:48	3:52	2:54	2:19	1:56

FORT WORTH, TEXAS      32°46'N-97°26'W      FORT WORTH NAS JRB (CARSWELL FLD) (KNFW)

Orig 18MAY23

# ILS Z or LOC Z RWY 18

SC-2, 08 AUG 2024 to 05 SEP 2024

SC-2, 08 AUG 2024 to 05 SEP 2024