

JOE POOL SEVEN DEPARTURE

FORT WORTH NAS JRB (CARSWELL FLD) (NF/W)
FORT WORTH, TEXAS

REGIONAL DEP CON
125.8 257.95
ATIS *
351.675
CLNC DEL
126.4 254.325
GND CON
121.675 279.575
NAVY FORT WORTH TOWER *
120.95 269.325

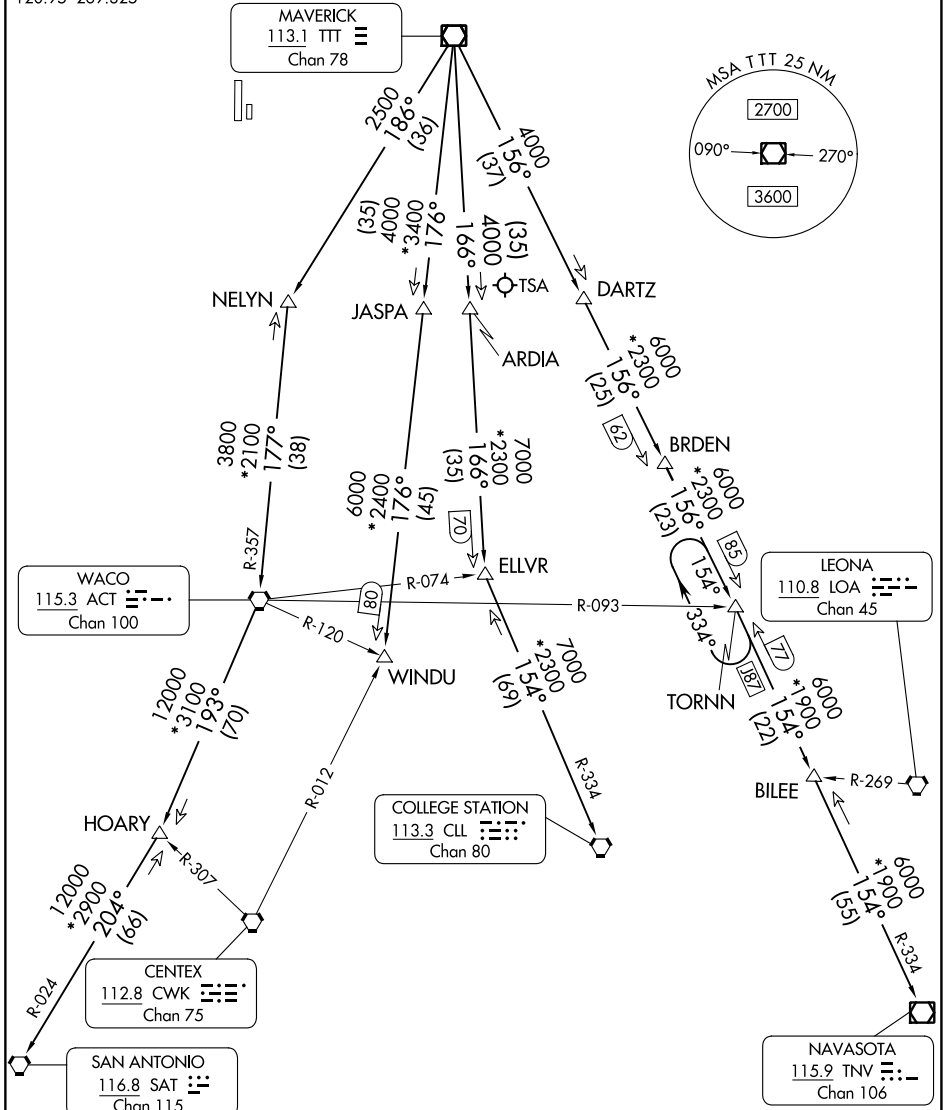
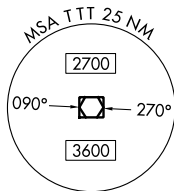
RADAR and DME required.

**TOP ALTITUDE:
ASSIGNED BY ATC**

TAKEOFF MINIMUMS

Refer to appropriate military service directives.

MAVERICK
113.1 TTT
Chan 78



SC-2, 08 AUG 2024 to 05 SEP 2024

SC-2, 08 AUG 2024 to 05 SEP 2024

(CONTINUED ON FOLLOWING PAGE)

NOTE: Chart not to scale.

JOE POOL SEVEN DEPARTURE

FORT WORTH, TEXAS
FORT WORTH NAS JRB (CARSWELL FLD) (NF/W)