

| | | |
|---------------------------|------------------------|---|
| LOC I-GMU 109.7 | APP CRS 006° | Rwy Idg 5393 TDZE 1015 Apt Elev 1048 |
|---------------------------|------------------------|---|

ILS or LOC RWY 1

GREENVILLE DOWNTOWN (GMU)

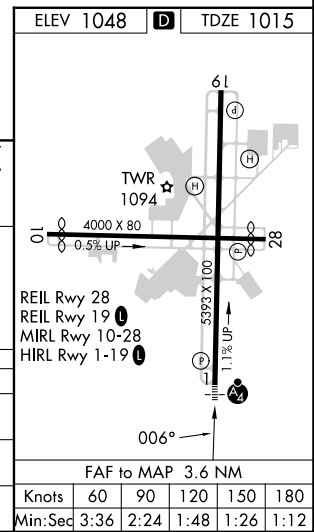
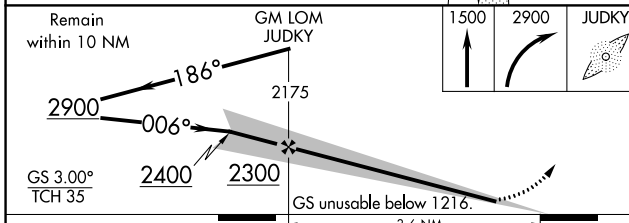
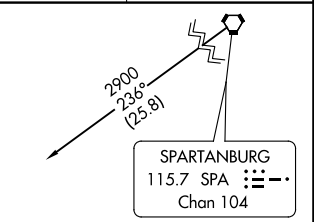
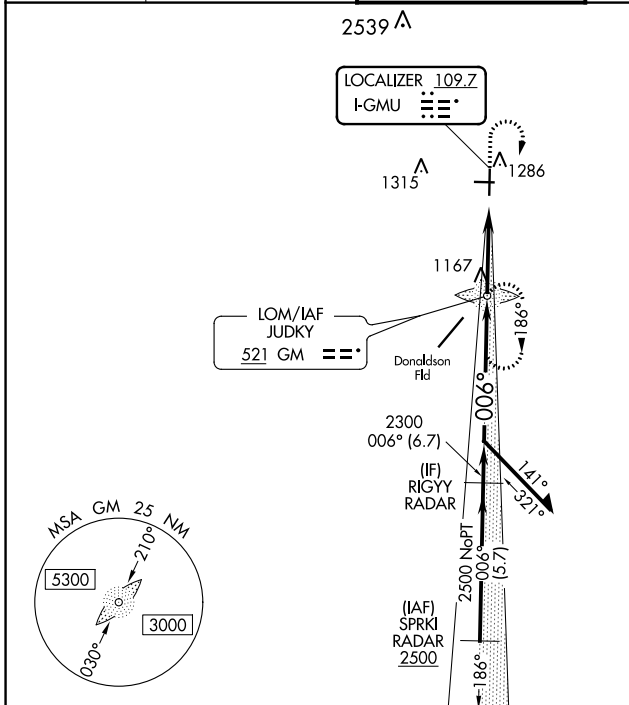
ADF required. RADAR required for procedure entry at SPRKI.

⚠ Inop table does not apply to S-ILS 1 all Cats. For inop ALS, increase S-LOC 1 visibility Cats C/D to 1 1/2 SM. When local altimeter setting not received, use Greer altimeter setting and increase DA to 1248, increase all MDAs 40 feet and Circling Cat C visibility 1/4 SM. For inop ALS when using Greer altimeter setting, increase S-LOC 1 visibility Cat C/D to 1 1/2 SM. When using Greer altimeter setting, inop table does not apply to S-ILS 1 all Cats.

MALSF

MISSED APPROACH: Climb to 1500 then climbing right turn to 2900 direct JUDKY LOM and hold, continue climb-in-hold to 2900.

| | | | | |
|--------------------------|--|--|--------------------------|-------------------------|
| ATIS ★ 127.075 | GREER APP CON★ 118.8 270.275 | GREENVILLE TOWER★ 119.9 (CTAF) 257.7 | GND CON 121.25 | UNICOM 122.95 |
|--------------------------|--|--|--------------------------|-------------------------|



SE-2, 08 AUG 2024 to 05 SEP 2024

SE-2, 08 AUG 2024 to 05 SEP 2024