

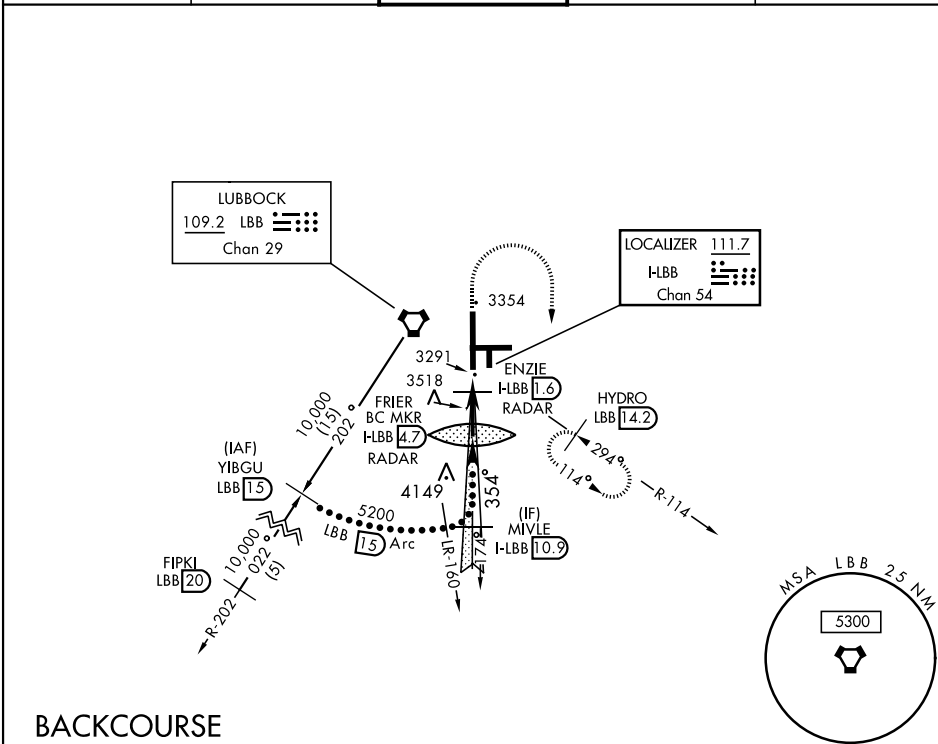
LUBBOCK, TEXAS

HI-LOC/DME BC RWY 35L

LOC I-LBB 111.7 Chan 54	APCH CRS 354°	Rwy Idg 11,500 TDZE 3254 Arpt Elev 3282	AL-241 [USAF]	LUBBOCK PRESTON SMITH INTL (KLBB)
---	-------------------------	--	---------------	-----------------------------------

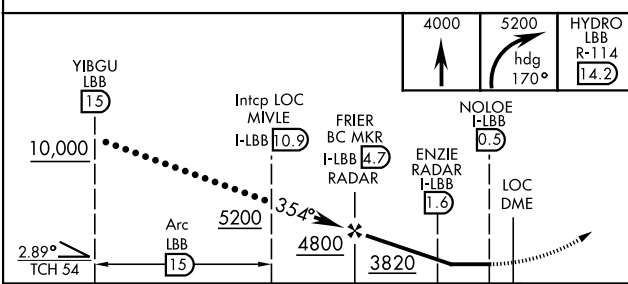
V Use I-LBB DME when on Localizer course.
A MISSED APPROACH: Climb to 4000, then climbing right turn to 5200 on Hdg 170° and on LBB VORTAC R-114 to HYDRO INT/LBB 14.2 DME and hold.

ATIS 125.3 270.275	APP CON 119.2 351.8	TOWER 120.5 239.3	GND CON 121.9 348.6	CLNC DEL 125.8 281.55
------------------------------	-------------------------------	-----------------------------	-------------------------------	---------------------------------

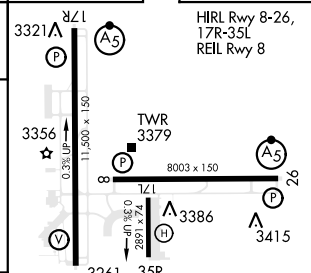


BACKCOURSE

EMERG SAFE ALT 100 NM 7300



ELEV 3282	D TDZE 3254
-----------	--------------------



CATEGORY	C	D	E
S-35L	3560-7/8	306 (300-7/8)	
C CIRCLING	3880-1 1/2 598 (600-1 1/2)	3940-2 658 (700-2)	4100-3 818 (900-3)

Knots	120	150	160	180	200
Min:Sec	2:06	1:41	1:35	1:24	1:16

LUBBOCK, TEXAS
Orig C 21MAY20

33°40'N-101°49'W

LUBBOCK PRESTON SMITH INTL (KLBB)

HI-LOC/DME BC RWY 35L

SC-2, 08 AUG 2024 to 05 SEP 2024

SC-2, 08 AUG 2024 to 05 SEP 2024