

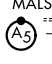
HI-VOR or TACAN Z RWY 26

VORTAC LBB 109.2 Chan 29	APCH CRS 282°	Rwy Idg TDZE Arpt Elev 8003 3255 3282
--	-------------------------	---

LUBBOCK PRESTON SMITH INTL (KLBB)

DME required. RADAR required for entry at CIRKI.

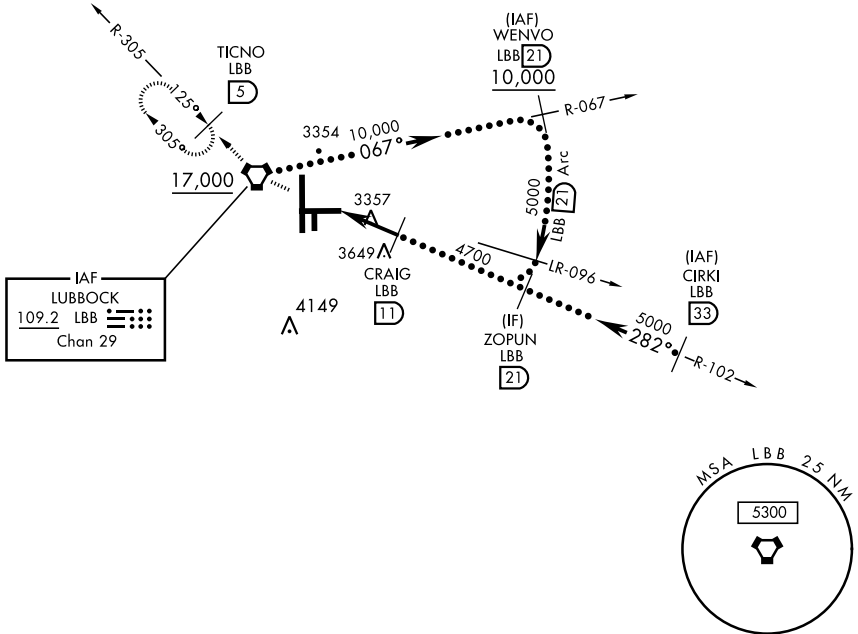
▼ * When ALS inop, increase CAT E vis to 1¼.

MALSR 

MISSED APPROACH: Climb and maintain 5100 direct LBB VORTAC and via LBB R-305 to TICNO (LBB 5 DME) and hold.

ATIS 125.3 270.275	APP CON 119.2 351.8	TOWER 120.5 239.3	GND CON 121.9 348.6	CLNC DEL 125.8 281.55
------------------------------	-------------------------------	-----------------------------	-------------------------------	---------------------------------

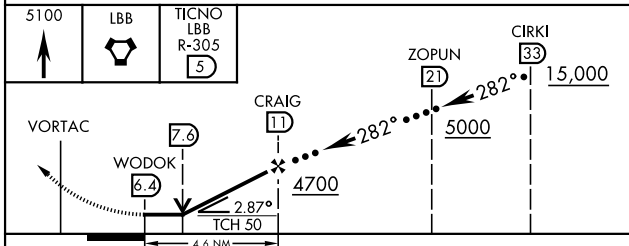
Procedure NA for arrival on LBB VORTAC airway R-052 CW R-114.



SC-2, 08 AUG 2024 to 05 SEP 2024

SC-2, 08 AUG 2024 to 05 SEP 2024

EMERG SAFE ALT 100 NM 7300



CATEGORY	C	D	E
S-26 *	3680/40	424	(400-¾)
CIRCLING	3880-1½ 598 (600-1½)	3940-2 658 (700-2)	4100-3 818 (900-3)

ELEV 3282	D	TDZE 3255
-----------	---	-----------

HIRL Rwy 8-26, 17R-35L
REL Rwy 8

HI-VOR or TACAN Z RWY 26