

(JDUBB4.JDUBB) 22083

EASTERN WV RGNL/SHEPHERD FLD (M.R.B)

# JDUBB FOUR DEPARTURE (RNAV) AL-249 (FAA)

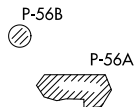
MARTINSBURG, WEST VIRGINIA

ASOS 119.925  
 CLNC DEL  
 121.8 257.65  
 132.075 269.075 (When twr closed)  
 GND CON  
 121.8 257.65  
 MARTINSBURG TOWER ★  
 124.3 (CTAF) 233.7  
 POTOMAC DEP CON  
 126.825 239.025

**TOP ALTITUDE:**  
**3000**

### TAKEOFF MINIMUMS

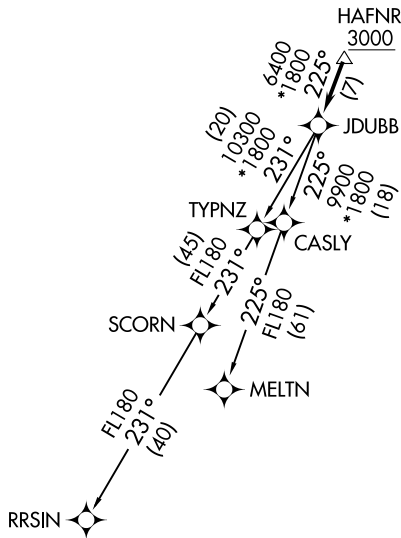
Rwy 8: Standard.  
 Rwy 26: Standard with a minimum  
 climb of 225' per NM to 2100.



- NOTE: RNAV 1.
- NOTE: RADAR required.
- NOTE: DME/DME/IRU or GPS required.
- NOTE: Turbo-jets only.
- NOTE: Takeoff Rwy 8: If issued an ATC heading that requires a westbound turn, climb heading 081° to 1200 prior to turning for obstacle avoidance.
- NOTE: Takeoff Rwy 26: If issued an ATC heading that requires a right turn, climb heading 261° to 2400 prior to turning for obstacle avoidance.

NE-4, 08 AUG 2024 to 05 SEP 2024

NE-4, 08 AUG 2024 to 05 SEP 2024



**DEPARTURE ROUTE DESCRIPTION**

Climb on heading assigned by ATC, expect RADAR vectors to HAFNR, then on track 225° to JDUBB, thence. . . .

. . . . on assigned transition, maintain 3000, expect clearance to filed altitude within ten (10) minutes after departure.

MELTN TRANSITION (JDUBB4.MELTN)  
RRSIN TRANSITION (JDUBB4.RRSIN)

NOTE: Chart not to scale.

JDUBB FOUR DEPARTURE (RNAV)  
 (JDUBB4.JDUBB) 31DEC20

MARTINSBURG, WEST VIRGINIA  
 EASTERN WV RGNL/SHEPHERD FLD (M.R.B)