


WAAS CH <b>93819</b> <b>W18A</b>	APP CRS <b>177°</b>	Rwy Idg <b>9503</b> TDZE <b>23</b> Apt Elev <b>25</b>
--	------------------------	---

# RNAV (GPS) RWY 18

MYRTLE BEACH INTL (MYR)

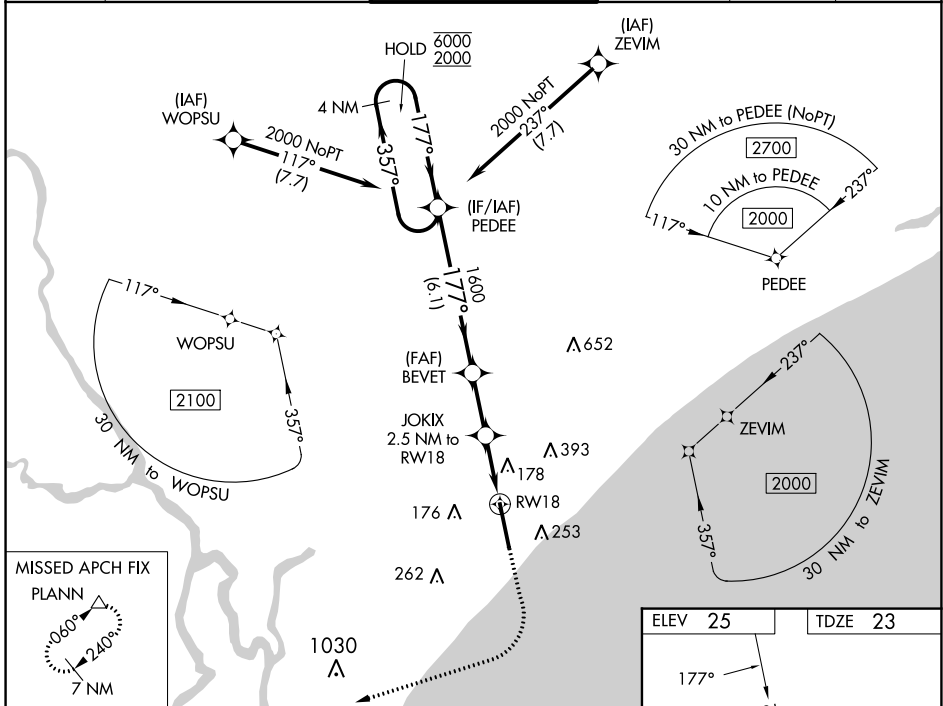
RNP APCH - GPS

▼ For uncompensated Baro-VNAV systems, LNAV/VNAV NA below -15°C or above 54°C. For inop ALS, increase LPV Cat E visibility to RVR 4000, increase LNAV/VNAV Cat E visibility to 1½ mile and increase LNAV/Cats C, D and E visibility to RVR 6000.  
\*RVR 1800 authorized with use of FD or AP or HUD to DA.

MALSR 

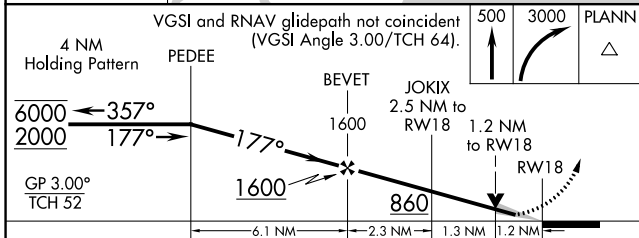
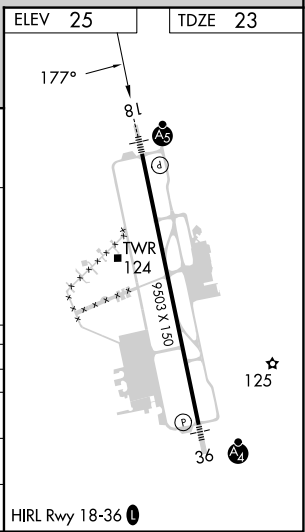
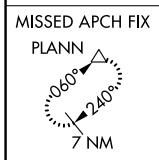
MISSED APPROACH: Climb to 500 then climbing right turn to 3000 direct PLANN and hold, continue climb-in-hold to 3000.

ATIS <b>123.925</b>	MYRTLE BEACH APP CON * (171° - 321°) <b>127.4 257.95</b> (322° - 170°) <b>119.2 350.3</b>	MYRTLE BEACH TOWER * <b>128.45</b> (CTAF) <b>0 259.3</b>	GND CON <b>120.3 275.8</b>	CLNC DEL <b>120.3</b>	UNICOM <b>122.95</b>
------------------------	---	---	-------------------------------	--------------------------	-------------------------



SE-2, 08 AUG 2024 to 05 SEP 2024

SE-2, 08 AUG 2024 to 05 SEP 2024



CATEGORY	A	B	C	D	E
LPV DA*		223/24	200 (200-½)		
LNAV/VNAV DA		465/50	442 (500-1)		
LNAV MDA	440/24	417 (500-½)	440/40	417 (500-¾)	
CIRCLING	560-1	535 (600-1)	700-2 675 (700-2)	700-2¼ 675 (700-2¼)	700-2½ 675 (700-2½)