

APP CRS	Rwy Idg	8810
039°	TDZE	11
	Apt Elev	17

RNAV (RNP) Z RWY 4R

NEWARK LIBERTY INTL (EWR)

RNP AR APCH.
RADAR required.

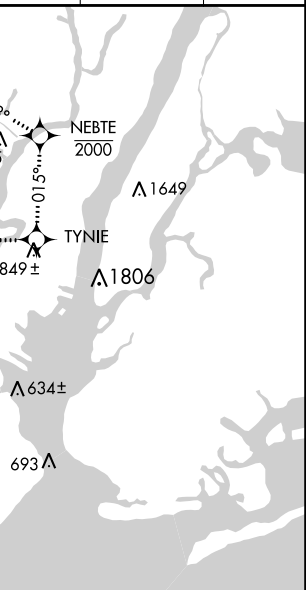
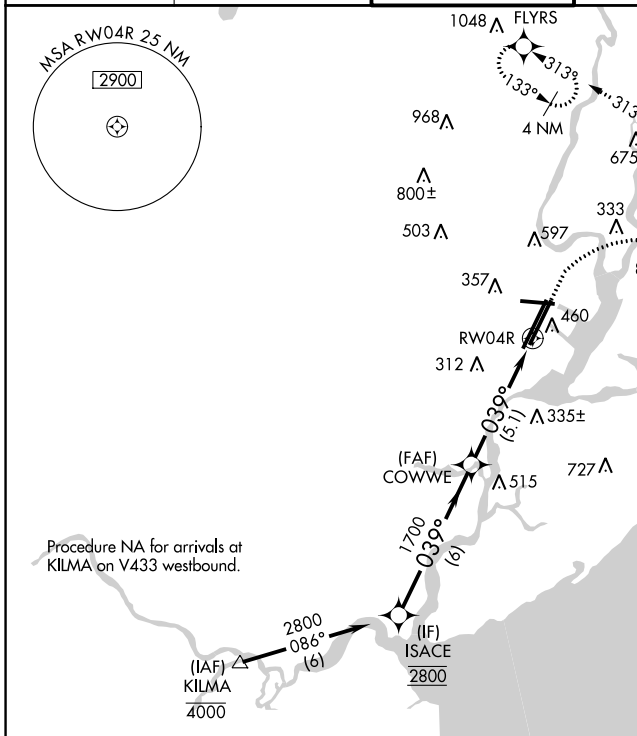
For uncompensated Baro-VNAV systems, procedure NA below -12°C or above 54°C. For inop ALS, increase RNP 0.30 all Cats visibility to 1 1/2 SM.

ALS-F-2

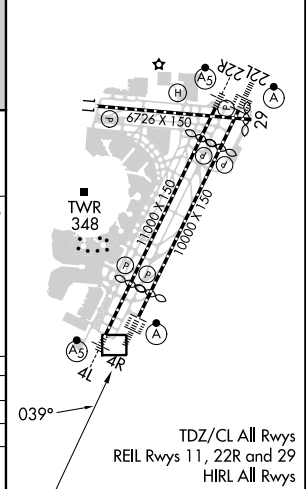
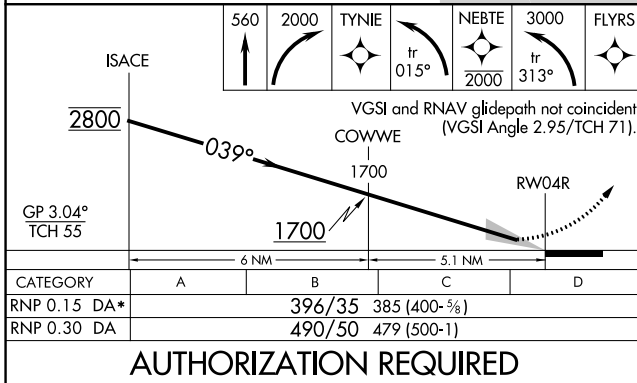


MISSED APPROACH: (Do not exceed 210K until NEBTE) Climb to 560 then climbing right turn to 2000 direct TYNIE and left turn on track 015° to NEBTE, cross NEBTE at or below 2000 then climbing left turn to 3000 on track 313° to FLYRS and hold, continue climb-in-hold to 3000.
* Missed approach requires minimum climb of 351 feet per NM to 660.

D-ATIS	NEW YORK APP CON	NEWARK TOWER	GND CON	CLNC DEL	CPDLC
115.7 134.825	128.55 379.9	118.3 257.6	121.8	118.85	



ELEV	17	D	TDZE	11
------	----	---	------	----



NE-2, 08 AUG 2024 to 05 SEP 2024

NE-2, 08 AUG 2024 to 05 SEP 2024