

LOC/DME I-GDI 108.5 Chan 22	APP CRS 134°	Rwy Idg TDZE 12 Apt Elev 21	7002
---	------------------------	---	-------------

ILS or LOC RWY 13

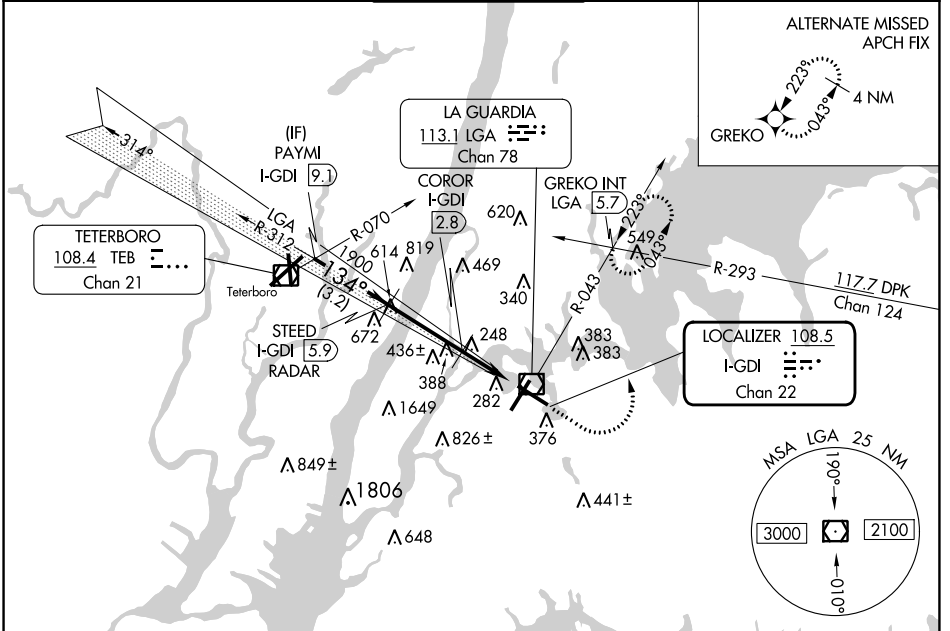
LAGUARDIA (LGA)

Radar required for procedure entry. DME or RADAR required for LOC only.

▼ For inop ALS, increase S-LOC 13 Cats C/D visibility to 2½ SM.
▲ Circling NA northwest of Rwy 4 and southwest of Rwy 13.

MALSR MISSED APPROACH: Climb to 800 then climbing left turn to 2000 on LGA VOR/DME R-043 to GREKO INT/LGA 5.7 DME and hold, continue climb-in-hold to 2000.

D-ATIS ARR 125.95 D-ATIS DEP 127.05	NEW YORK APP CON 120.8 263.0	LAGUARDIA TOWER 118.7 263.0	GND CON 121.7 263.0	CLNC DEL 135.2	CPDLC
--	--	---------------------------------------	-------------------------------	--------------------------	-------



NE-2, 08 AUG 2024 to 05 SEP 2024

NE-2, 08 AUG 2024 to 05 SEP 2024

VGSI and ILS glidepath not coincident (VGSI Angle 3.10/TCH 55).	800	2000	ELEV 21	TDZE 12
PAYMI I-GDI [9.1]	GREKO INT			
STEED I-GDI [5.9] RADAR	LGA R-043			
*1900 when assigned by ATC				
GS 3.10° TCH 49				
	3.2 NM	3.1 NM	1.1 NM	1.3 NM
CATEGORY	A	B	C	D
S-ILS 13	212/18 200 (200-½)			
S-LOC 13	800/24 788 (800-½)	800/40 788 (800-¾)	800-1¼ 788 (800-1¼)	788 (800-1¼)
C CIRCLING	800-1 779 (800-1)	800-1¼ 779 (800-1¼)	1080-3 1059 (1100-3)	1260-3 1239 (1300-3)
COROR FIX MINIMUMS				
S-LOC 13	500/24 488 (500-½)	500/50 488 (500-1)		
C CIRCLING	700-1 679 (700-1)	1080-3 1059 (1100-3)	1260-3 1239 (1300-3)	

TDZ/CL Rws 4, 13 and 22
HIRL Rws 4-22 and 13-31
REIL Rwy 31

FAF to MAP 5.5 NM

Knots	60	90	120	150	180
Min:Sec	5:30	3:40	2:45	2:12	1:50