

LOC/DME I-PZV <b>108.5</b> Chan <b>22</b>	APP CRS <b>316°</b>	Rwy Idg <b>7002</b> TDZE <b>7</b> Apt Elev <b>21</b>
---	------------------------	--

# LOC RWY 31

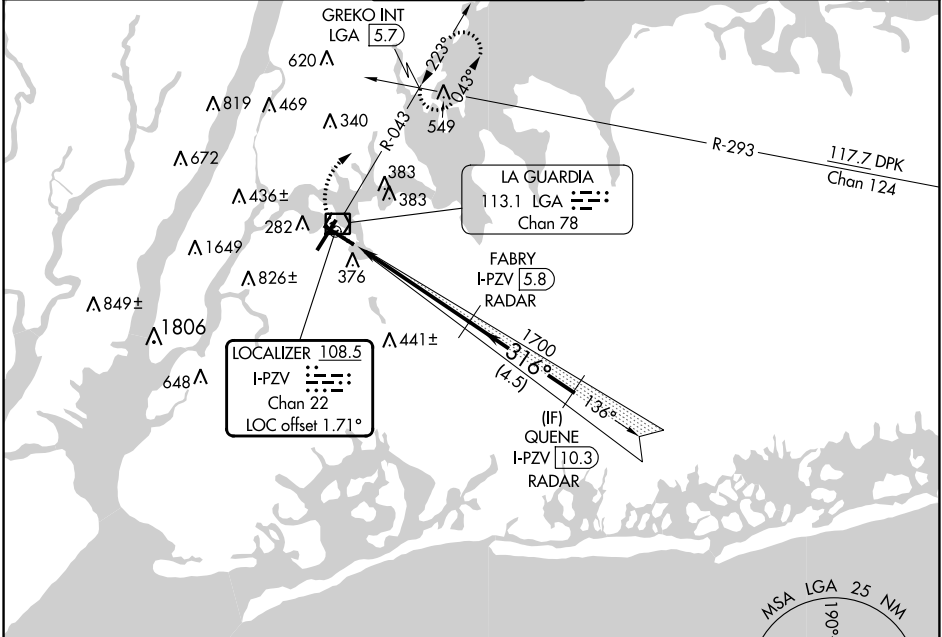
LAGUARDIA (LGA)

RADAR required for procedure entry. DME required.

▼ Rwy 31 helicopter visibility reduction below RVR 4000 NA.  
▲ Circling NA northwest of Rwy 4 and southwest of Rwy 13.

MISSED APPROACH: Climbing right turn to 2000 on LGA VOR/DME R-043 to GREKO INT/LGA 5.7 DME and hold, continue climb-in-hold to 2000.

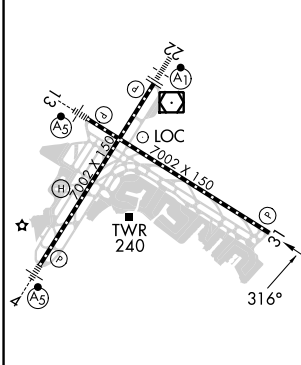
D-ATIS ARR <b>125.95</b> D-ATIS DEP <b>127.05</b>	NEW YORK APP CON <b>120.8 263.0</b>	LAGUARDIA TOWER <b>118.7 263.0</b>	GND CON <b>121.7 263.0</b>	CLNC DEL <b>135.2</b>	CPDLC
--	--	---------------------------------------	-------------------------------	--------------------------	-------



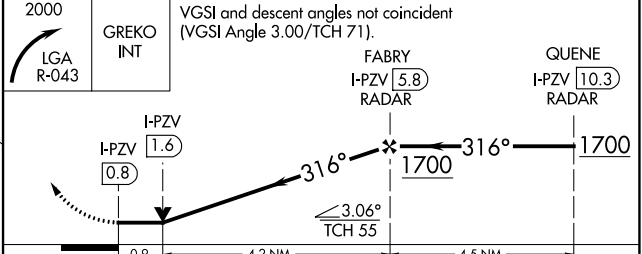
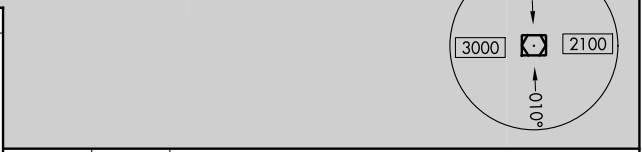
NE-2, 08 AUG 2024 to 05 SEP 2024

NE-2, 08 AUG 2024 to 05 SEP 2024

ELEV 21	<b>D</b>	TDZE 7
---------	----------	--------



TDZ/CL Rws 4, 13 and 22  
HIRL Rws 4-22 and 13-31  
REIL Rwy 31



CATEGORY	A	B	C	D
S-31	600/55	593 (600-1)	600-1¾	593 (600-1¾)
<b>C</b> CIRCLING	700-1	679 (700-1)	1080-3 1059 (1100-3)	1260-3 1239 (1300-3)