

LOC I-PMD 110.7	APP CRS 254°	Rwy Idg TDZE Apt Elev	12002 2503 2543
---------------------------	------------------------	-----------------------------	--

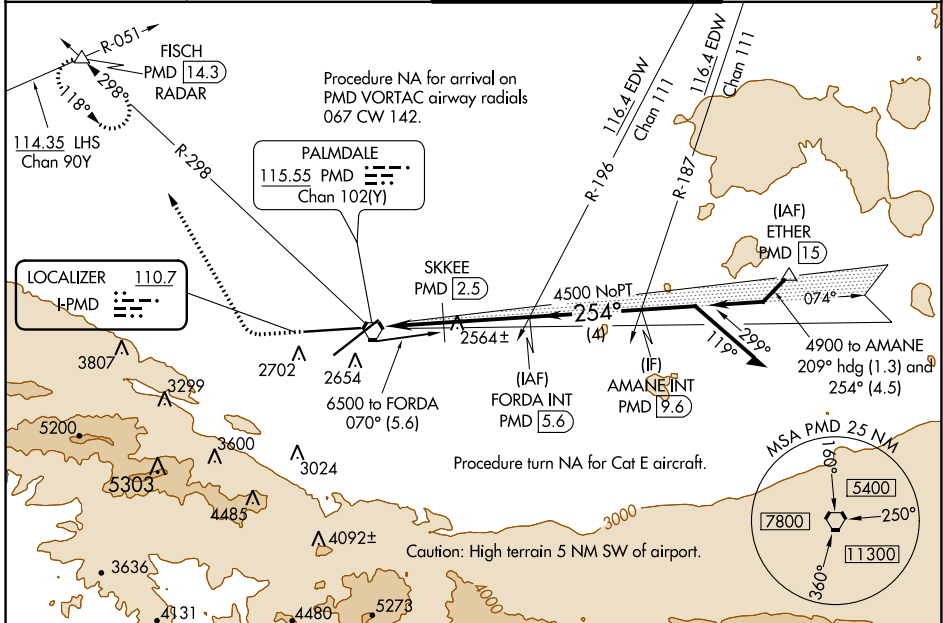
ILS or LOC RWY 25

PALMDALE USAF PLANT 42 (PMD)

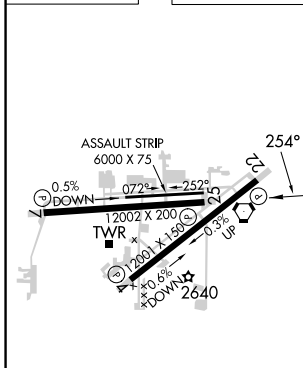
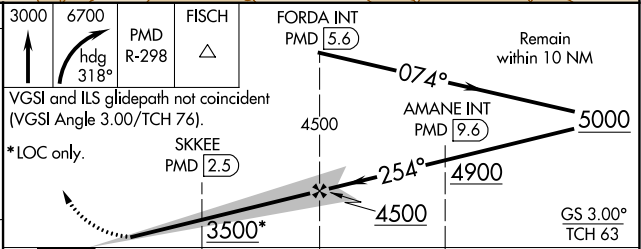
▽ DME from PMD VORTAC.
△ Simultaneous reception of I-PMD and PMD DME required.
 Circling NA for Cats C, D, and E south of Rwy 4 and 25.

MISSED APPROACH: Climb to 3000 then climbing right turn to 6700 on heading 318° and on PMD VORTAC R-298 to FISCH INT/PMD 14.3 DME/RADAR and hold, continue climb-in-hold to 6700.

ATIS 118.275	JOSHUA APP CON 124.55 363.0	PALMDALE TOWER ★ 123.7 (CTAF) 0 317.6	GND CON 121.9 317.6
------------------------	---------------------------------------	--	-------------------------------



ELEV 2543	TDZE 2503
-----------	-----------



REIL Rwy 4, 7, 22 and 25
 HIRL Rwy 4-22 and 7-25

FAF to MAP 6.1 NM

Knots	60	90	120	150	180
Min:Sec	6:06	4:04	3:03	2:26	2:02

CATEGORY	A	B	C	D	E
S-ILS 25	2703- ³ / ₄ 200 (200- ³ / ₄)				
S-LOC 25	3500-1 ¹ / ₄ 997 (1000-1 ¹ / ₄)	3500-1 ¹ / ₂ 997 (1000-1 ¹ / ₂)	3500-3	3740-3	3760-3
C CIRCLING	3500-1 ¹ / ₄ 957 (1000-1 ¹ / ₄)	3500-1 ¹ / ₂ 957 (1000-1 ¹ / ₂)	3500-3 957 (1000-3)	3740-3 1197 (1200-3)	3760-3 217 (1300-3)
SKKEE FIX MINIMUMS (DME REQUIRED)					
S-LOC 25	2820-1	317 (300-1)	2820- ⁷ / ₈	317 (300- ⁷ / ₈)	
C CIRCLING	3020-1 477 (500-1)	3060-1 517 (600-1)	3140-1 ¹ / ₂ 597 (600-1 ¹ / ₂)	3740-3 1197 (1200-3)	3760-3 217 (1300-3)

SW-3, 08 AUG 2024 to 05 SEP 2024

SW-3, 08 AUG 2024 to 05 SEP 2024