

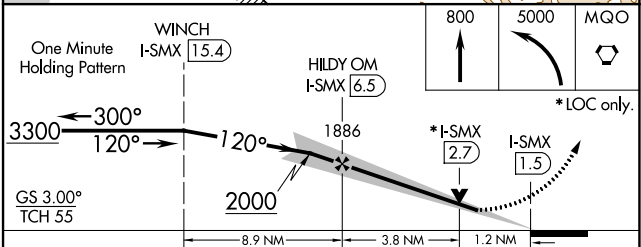
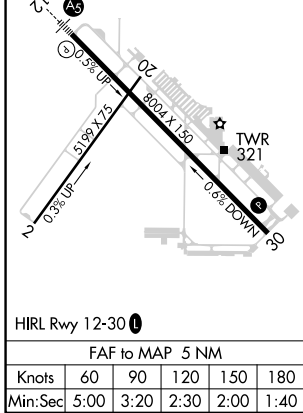
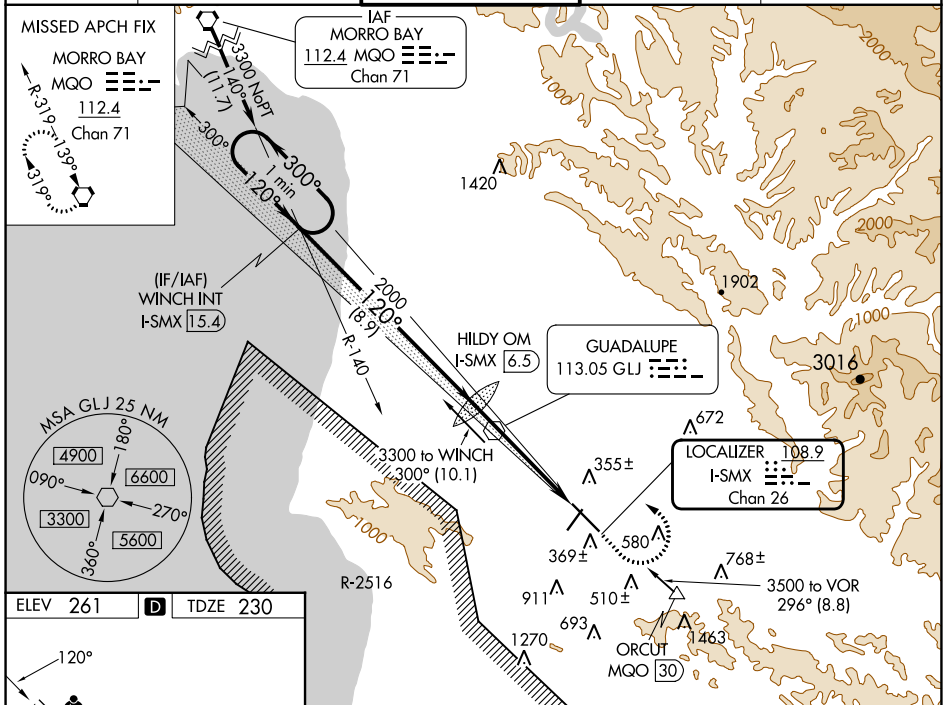
LOC/DME I-SMX 108.9 Chan 26	APP CRS 120°	Rwy Idg 8004 TDZE 230 Apt Elev 261
--	------------------------	---

ILS or LOC RWY 12

SANTA MARIA PUB/CAPT G ALLAN HANCOCK FLD (SMX)

<p>⚠ Night Landing: Rwy 2 NA. VDP NA when using San Luis Obispo altimeter setting. When local altimeter setting not received, use San Luis Obispo altimeter setting and increase DA to 489 feet; increase all MDA 60 feet and S-LOC visibility Cat C and D to RVR 5500. For inop MALS/R, increase S-LOC 12 Cat C/D visibility to 1 1/8 mile.</p> <p># RVR 1800 authorized with use of FD or AP or HUD to DA; NA when using San Luis Obispo altimeter setting.</p>	<p>MALS/R</p>	<p>MISSED APPROACH: Climb to 800, then climbing left turn to 5000 direct MQO VORTAC and hold.</p>
--	---------------	---

ATIS 121.15	SANTA BARBARA APP CON* 124.15 327.8	SANTA MARIA TOWER* 118.3 (CTAF) 239.25	GND CON 121.9	UNICOM 122.95
-----------------------	---	--	-------------------------	-------------------------



CATEGORY	A	B	C	D
S-ILS 12#	430/24 200 (200-1/2)			
S-LOC 12	680/24	450 (500-1/2)	680/50	450 (500-1)
CIRCLING	860-1 599 (600-1)	1000-1 739 (800-1)	1420-3 1159 (1200-3)	1520-3 1259 (1300-3)

SW-3, 08 AUG 2024 to 05 SEP 2024

SW-3, 08 AUG 2024 to 05 SEP 2024