

VORTAC BFF	APP CRS	Rwy Idg	8002
112.6	245°	TDZE	3967
Chan 73		Apt Elev	3967

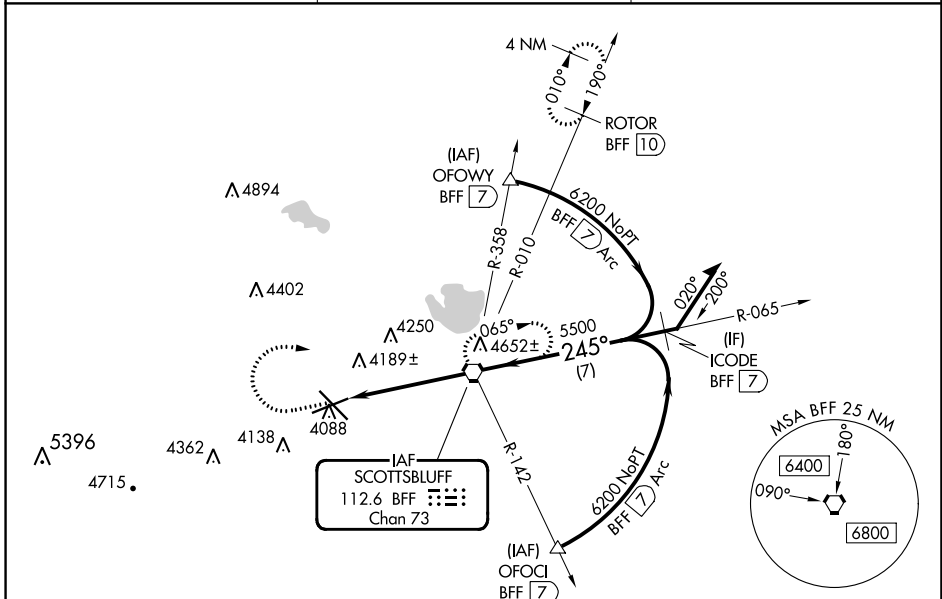
VOR or TACAN RWY 23

WESTERN NEBRASKA RGNL/WM B HEILIG FLD/SCOTTSBLUFF (BTF)

⚠ When local altimeter setting not received, use Alliance altimeter setting: increase all MDAs 100 feet and visibility Cats C and D ½ SM. VDP NA when using Alliance altimeter setting. Visibility reduction by helicopters NA.

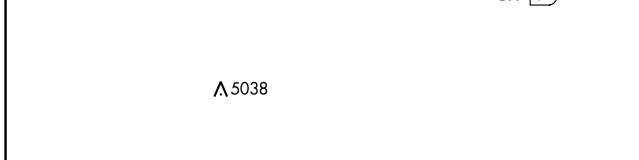
MISSED APPROACH: Climb to 5000 then climbing right turn to 6500 direct BFF VORTAC and hold (TACAN aircraft continue climb to 7300 via BFF R-010 to ROTOR 10 DME and hold north, right turn 190° inbound).

ASOS 121.025	DENVER CENTER 127.95 338.2	UNICOM 123.0 (CTAF) 0
------------------------	--------------------------------------	---------------------------------

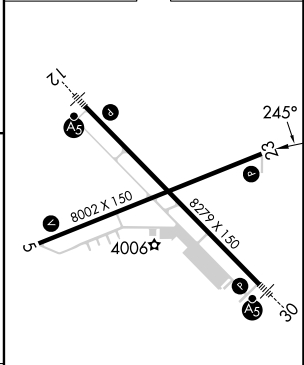


NC-2, 08 AUG 2024 to 05 SEP 2024

NC-2, 08 AUG 2024 to 05 SEP 2024



ELEV 3967	D TDZE 3967
-----------	--------------------



5000	6500	BFF
↑	↷	⬡
<p>BFF VORTAC</p> <p>Remain within 10 NM</p> <p>065°</p> <p>245°</p> <p>6200</p> <p>5500</p> <p>1.5 NM</p> <p>3.1 NM</p>		

CATEGORY	A	B	C	D
S-23	4500-1 533 (600-1)	4500-1½ 533 (600-1½)	4500-1¾ 533 (600-1¾)	4500-2 533 (600-2)
C CIRCLING	4500-1 533 (600-1)	4560-1½ 593 (600-1½)	4740-2½ 773 (800-2½)	

HIRL Rwy 12-30 L	
MIRL Rwy 5-23 L	
FAF to MAP 4.7 NM	
Knots	60 90 120 150 180
Min:Sec	4:42 3:08 2:21 1:53 1:34

VOR or TACAN RWY 23