

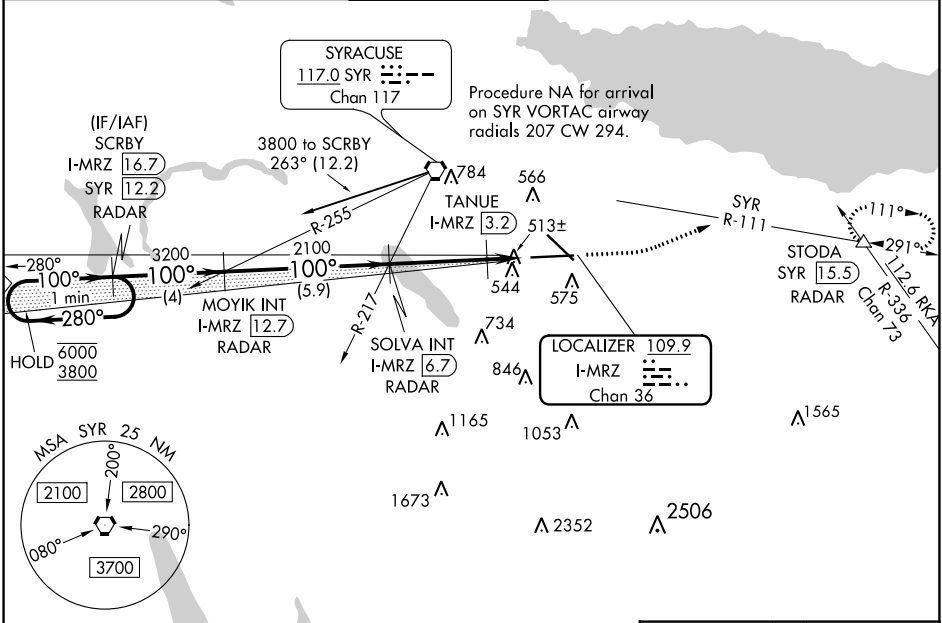
LOC/DME I-MRZ 109.9 Chan 36	APP CRS 100°	Rwy ldg TDZE 421 Apt Elev 421	9014
--	------------------------	---	-------------

ILS or LOC RWY 10

SYRACUSE HANCOCK INTL (SYR)

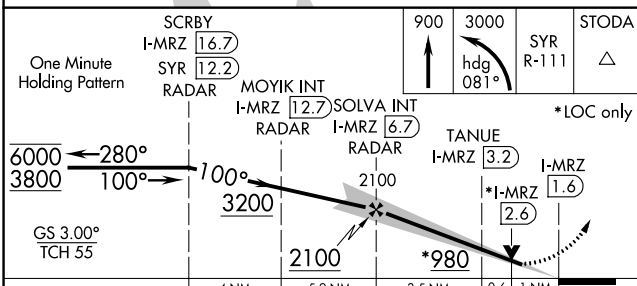
DME or RADAR required.		MALSR 	MISSED APPROACH: Climb to 900 then climbing left turn to 3000 on heading 081° and on SYR VORTAC R-111 to STODA INT/ SYR VORTAC 15.5 DME/RADAR and hold.	
▼ TANUE fix minimums, for inoperative ALS, increase S-LOC 10 ▲ Cats C and D visibility to RVR 5500. **RVR 1800 authorized with use of FD or AP or HUD to DA.				

ATIS 124.225	SYRACUSE APP CON 126.125 269.125	SYRACUSE TOWER 120.3 239.0	GND CON 121.7 348.6	CLNC DEL 125.05 257.775
------------------------	--	--------------------------------------	-------------------------------	-----------------------------------



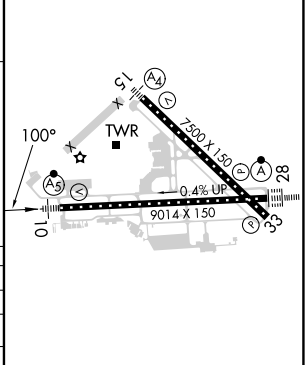
NE-2, 08 AUG 2024 to 05 SEP 2024

NE-2, 08 AUG 2024 to 05 SEP 2024



ELEV 421	TDZE 421
----------	----------

CATEGORY	A	B	C	D
S-ILS 10**	621/24 200 (200-1/2)			
S-LOC 10	980/24	559 (600-1/2)	980/60	559 (600-1 1/4)
CIRCLING	980-1	559 (600-1)	1020-1 1/8 599 (600-1 1/2)	1180-2 1/2 759 (800-2 1/2)
TANUE FIX MINIMUMS (DME REQUIRED)				
S-LOC 10	780/24	359 (400-1/2)	780/30	359 (400-3/4)
CIRCLING	900-1 479 (500-1)	920-1 499 (500-1)	1020-1 1/2 599 (600-1 1/2)	1180-2 1/2 759 (800-2 1/2)



TDZ/CL Rwy 28	HRL Rwy 10-28 and 15-33				
FAF to MAP 5.1 NM					
Knots	60	90	120	150	180
Min:Sec	5:06	3:24	2:33	2:02	1:42