

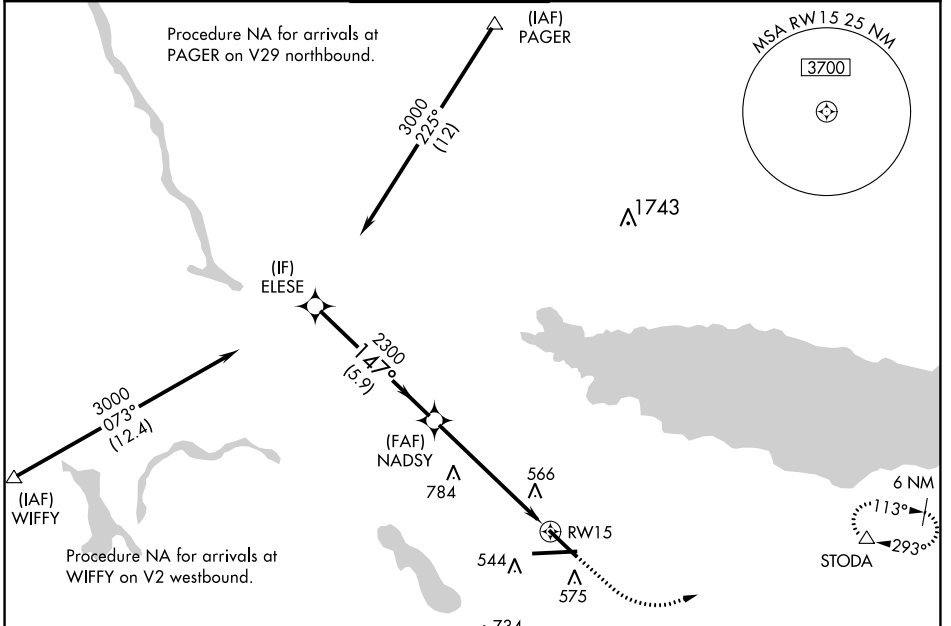
WAAS CH <b>50117</b> <b>W15A</b>	APP CRS <b>147°</b>	Rwy Idg TDZE Apt Elev	<b>7500</b> <b>417</b> <b>421</b>
--	------------------------	-----------------------------	---

# RNAV (GPS) RWY 15

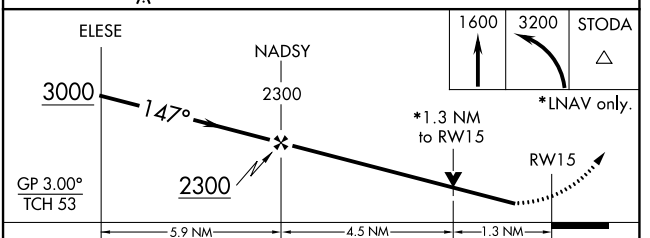
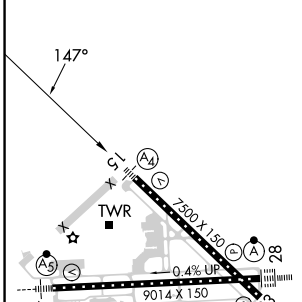
SYRACUSE HANCOCK INTL (SYR)

RNP APCH.		MALS	MISSED APPROACH: Climb to 1600 then climbing left turn to 3200 direct STODA and hold, continue climb-in-hold to 3200.
<p>▼ Rwy 15 helicopter visibility reduction below 3/4 SM NA.</p> <p>▲ Inop table does not apply to LPV DA all Cats. For uncompensated Baro-VNAV systems, LNAV/VNAV NA below -19°C or above 54°C.</p>			

ATIS <b>124.225</b>	SYRACUSE APP CON <b>126.125 269.125</b>	SYRACUSE TOWER <b>120.3 239.0</b>	GND CON <b>121.7 348.6</b>	CLNC DEL <b>125.05 257.775</b>
------------------------	--	--------------------------------------	-------------------------------	-----------------------------------



ELEV 421	<b>D</b>	TDZE 417
----------	----------	----------



CATEGORY	A	B	C	D
LPV DA		667-3/4	250 (300-3/4)	
LNAV/VNAV DA		894-1/8	477 (500-1/8)	
LNAV MDA	880-3/4	463 (500-3/4)	880-1/8	463 (500-1/8)
<b>C</b> CIRCLING	900-1 479 (500-1)	920-1 499 (500-1)	1020-1/2 599 (600-1/2)	1180-2/2 759 (800-2/2)

TDZ/CL Rwy 28

HIRL Rwy 10-28 and 15-33

NE-2, 08 AUG 2024 to 05 SEP 2024

NE-2, 08 AUG 2024 to 05 SEP 2024