

RNAV (GPS) RWY 15

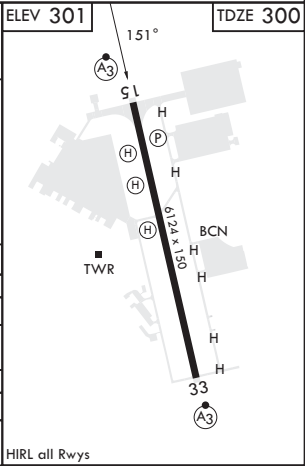
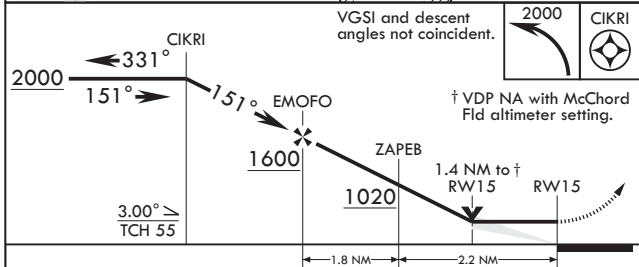
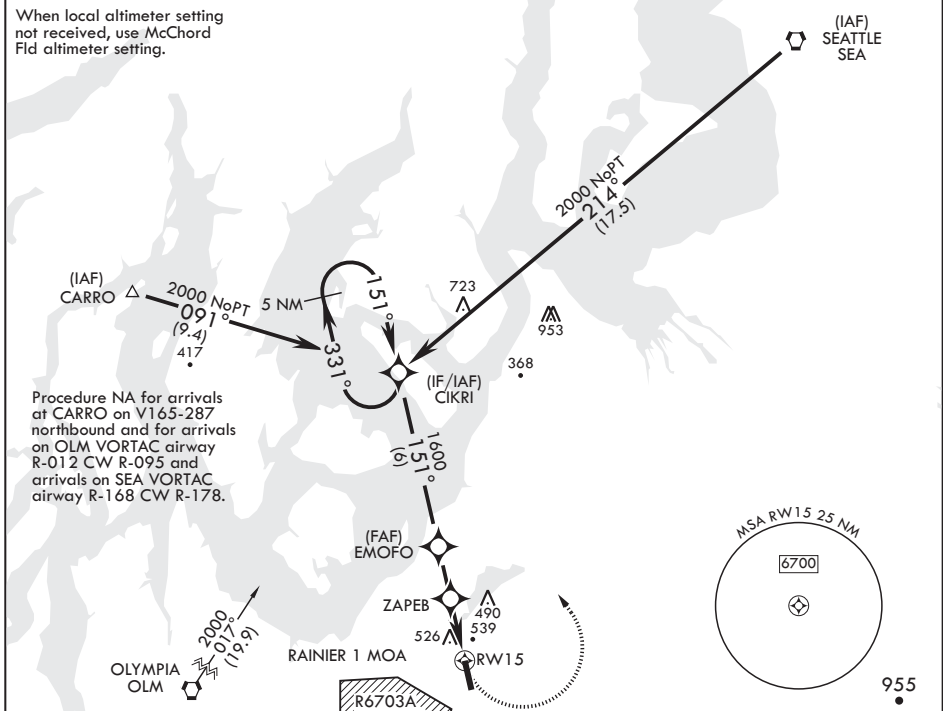
AL-413 (USA)

GRAY AAF (JOINT BASE LEWIS MCCHORD) (KGRF)

APCH CRS	Rwy Idg	6124
151°	TDZE	300
	Arprt Elev	301

RNP APCH	SSALR
▼ *Circling not authorized W of Rwy 15-33.	MISSED APPROACH: Climbing left turn to 2000 direct CIKRI and hold.

ATIS	SEATTLE APP CON/DEP CON	TOWER *	GND CON	CLNC DEL	PAR
124.65 306.2	120.1 290.9	119.325 (CTAF) 256.8	121.9 290.2	121.9 290.2	



CATEGORY	A	B	C	D
LNAV MDA	800/24 500 (500-½)	800/50 500 (500-1)	840-1½ 539 (600-1½)	920-2 619 (700-2)
C CIRCLING*	840-1 539 (600-1)	840-1½ 539 (600-1½)	920-2 619 (700-2)	
MC CHORD FLD ALTIMETER SETTING MINIMUMS				
LNAV MDA	820/24	520 (600-½)	860-1½ 559 (600-1½)	940-2 639 (700-2)
C CIRCLING*	860-1 559 (600-1)	860-1½ 559 (600-1½)	940-2 639 (700-2)	

RNAV (GPS) RWY 15

NW-1, 08 AUG 2024 to 05 SEP 2024

NW-1, 08 AUG 2024 to 05 SEP 2024