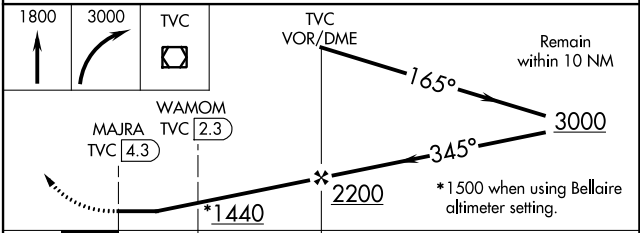
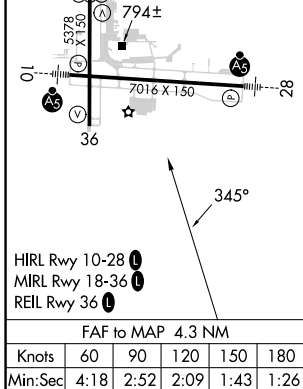
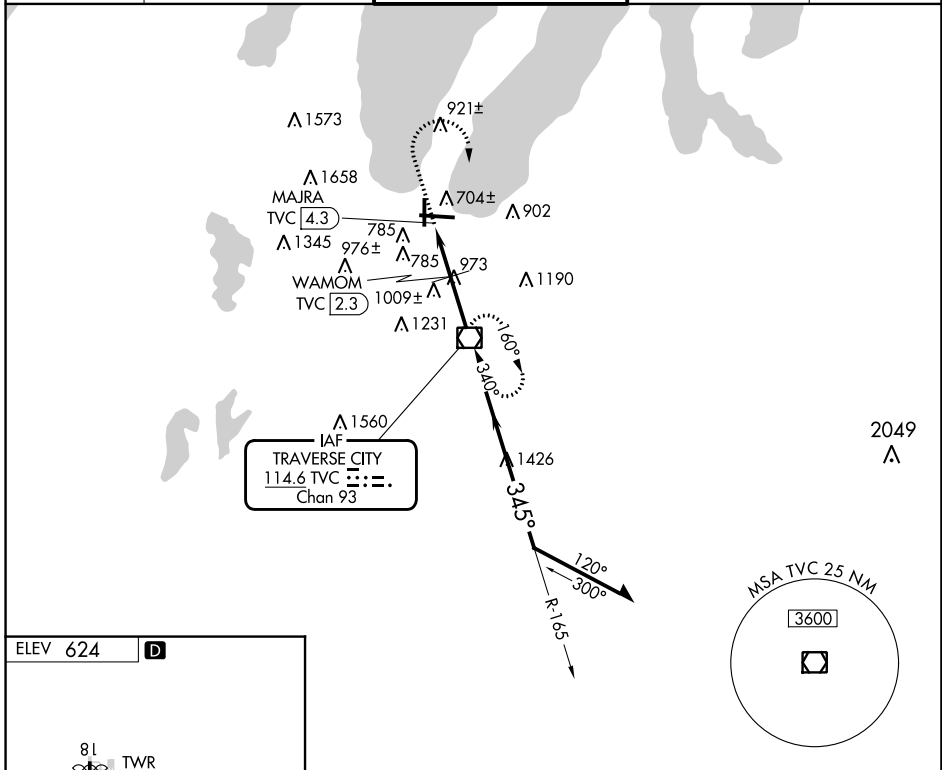


VOR/DME TVC <b>114.6</b> Chan <b>93</b>	APP CRS <b>345°</b>	Rwy Idg TDZE Apt Elev <b>624</b>	<b>N/A</b> <b>N/A</b> <b>624</b>
---	------------------------	---	--

**VOR-A**  
CHERRY CAPITAL (TVC)

<p><b>▽</b> <b>▲</b> When local altimeter setting not received, use Bellaire altimeter setting and increase all MDA 60 feet and all Cat C visibility 1/4 mile.</p>		<p>MISSED APPROACH: Climb to 1800 then climbing right turn to 3000 direct TVC VOR/DME and hold.</p>		
ATIS <b>119.175</b>	MINNEAPOLIS CENTER <b>132.9 338.3</b>	TRAVERSE CITY TOWER * <b>124.2 (CTAF) 0 348.6</b>	GND CON <b>121.8 348.6</b>	UNICOM <b>122.95</b>



CATEGORY	A	B	C	D
<b>C</b> CIRCLING	1440-1 1/4	816 (900-1 1/4)	1500-2 1/2 876 (900-2 1/2)	1720-3 1096 (1100-3)
WAMOM FIX MINIMUMS (DME REQUIRED)				
<b>C</b> CIRCLING	1300-1	676 (700-1)	1500-2 1/2 876 (900-2 1/2)	1720-3 1096 (1100-3)

EC-1, 08 AUG 2024 to 05 SEP 2024

EC-1, 08 AUG 2024 to 05 SEP 2024