

# HI-ILS or LOC RWY 20

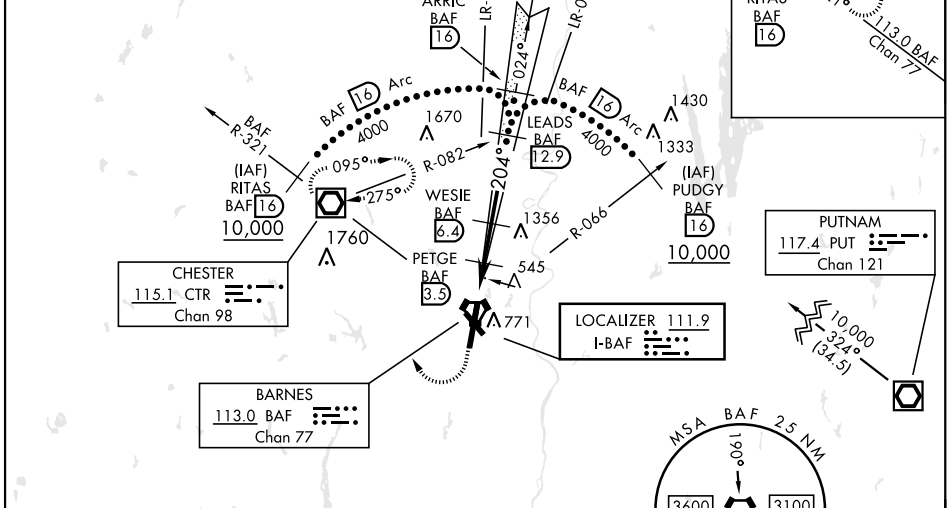
LOC I-BAF <b>111.9</b>	APCH CRS <b>204°</b>	Rwy ldg TDZE <b>8919</b> <b>270</b> <b>270</b> Arprt Elev	AL-446 [USAF]	WESTFIELD-BARNES RGNL (KBAF)
---------------------------	-------------------------	---	---------------	------------------------------

A5
MALS
 MISSED APPROACH: Climb to 1300, then climbing right turn to 4000 direct CTR VOR/DME and hold, continue climb in hold to 4000.  
 (TACAN actf climb to 1300, then climbing right turn to 4000 via hdg 010° and BAF VORTAC R-321 to RITAS and hold.)

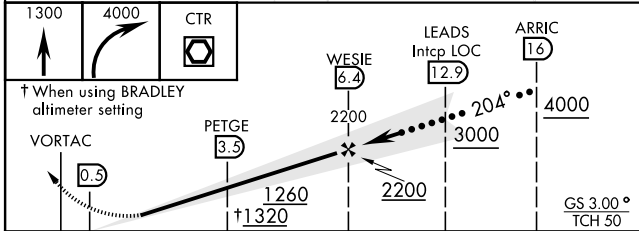
ATIS <b>127.1 263.15</b>	BRADLEY APP CON <b>125.35 281.5</b>	WESTFIELD TOWER ★ <b>118.9 (CTAF) 0 251.1</b>	GND CON <b>121.7 289.4</b>
-----------------------------	--	--	-------------------------------

\*\*\* When ALS inop, increase CAT E vis to 3 miles.  
 When local altimeter setting not received, use Bradley Intl altimeter setting.  
**3491**

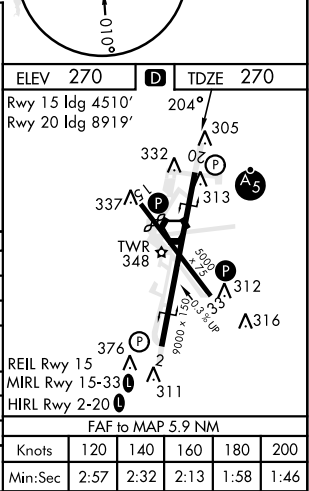
Night Landing: Rwy 15, Rwy 20, Rwy 33 NA at night.  
 DME from BAF VORTAC



EMERG SAFE ALT 100 NM 7000



CATEGORY	C	D	E
S-ILS 20*	520/50	250	(300-1)
S-LOC 20**	800/55	530	(600-1¼)
<b>C</b> CIRCLING	1160-2¾	890 (900-2¾)	1660-3 1390 (1400-3)
BRADLEY INTL ALTIMETER			
S-ILS 20*	564/50	294	(300-1)
S-LOC 20***	860-1¼	590	(600-1¼)
<b>C</b> CIRCLING	1200-2¾ 930 (1000-2¾)	1200-3 930 (1000-3)	1680-3 1410 (1500-3)



# HI-ILS or LOC RWY 20

NE-1, 08 AUG 2024 to 05 SEP 2024

NE-1, 08 AUG 2024 to 05 SEP 2024