

ALTUS, OKLAHOMA

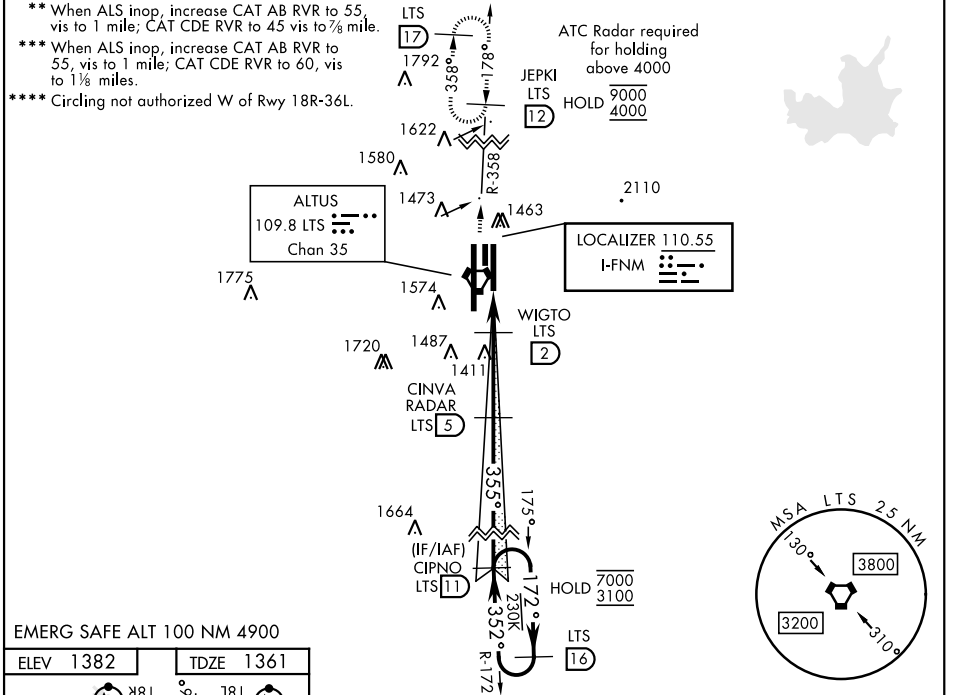
ILS or LOC RWY 36R

LOC I-FNM 110.55	APCH CRS 355°	Rwy Idg 9001 TDZE 1361 Arprt Elev 1382
----------------------------	-------------------------	---

AL-482 [USAF]

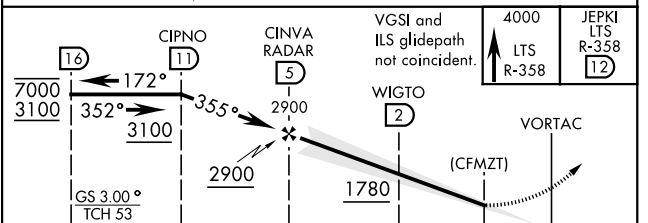
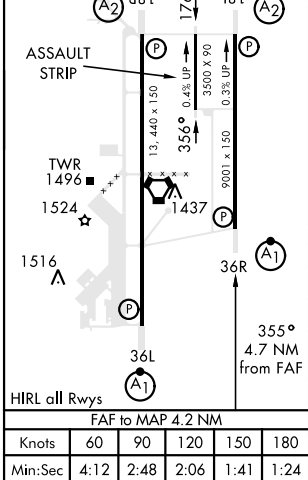
ALTUS AFB (KLTS)

DME or RADAR required.						ALSF-1 	MISSED APPROACH: Climb to 4000, intercept LTS VORTAC R-358 to 12 DME (JEPKI) and hold.
ATIS ★ 109.8 273.5	FORT WORTH CENTER 133.5 350.35	APP CON 125.1 353.7	TOWER ★ 119.65 254.4	GND CON 121.85 275.8	CLNC DEL 120.65 284.7		



EMERG SAFE ALT 100 NM 4900

ELEV 1382	TDZE 1361
-----------	-----------



CATEGORY	A	B	C	D	E
S-ILS 36R*	1561/24		200	(200-1/2)	
S-LOC 36R**	1680/24		319	(300-1/2)	
C CIRCLING	1780-1 398 (400-1)	1840-1 458 (500-1)	1880-1 1/2 498 (500-1 1/2)	2080-2 1/4 698 (700-2 1/4)	2180-2 3/4 798 (800-2 3/4)
LOCAL ALTIMETER, WITHOUT LAST STEPDOWN FIX					
S-LOC 36R***	1780/24	419 (400-1/2)	1780/40 419 (400-3/4)		
C CIRCLING	1780-1 398 (400-1)	1840-1 458 (500-1)	1880-1 1/2 498 (500-1 1/2)	2080-2 1/4 698 (700-2 1/4)	2180-2 3/4 798 (800-2 3/4)

ALTUS, OKLAHOMA
Amdt 5 14JUL22

34°40'N-99°16'W

ALTUS AFB (KLTS)

ILS or LOC RWY 36R

SC-1, 08 AUG 2024 to 05 SEP 2024

SC-1, 08 AUG 2024 to 05 SEP 2024