

ALTUS, OKLAHOMA

ILS or RNAV (GPS) Y RWY 36L

LOC I-LTS 110.3	APCH CRS 355°	Rwy Idg 13,440	TDZE 1354
		Arprt Elev 1382	

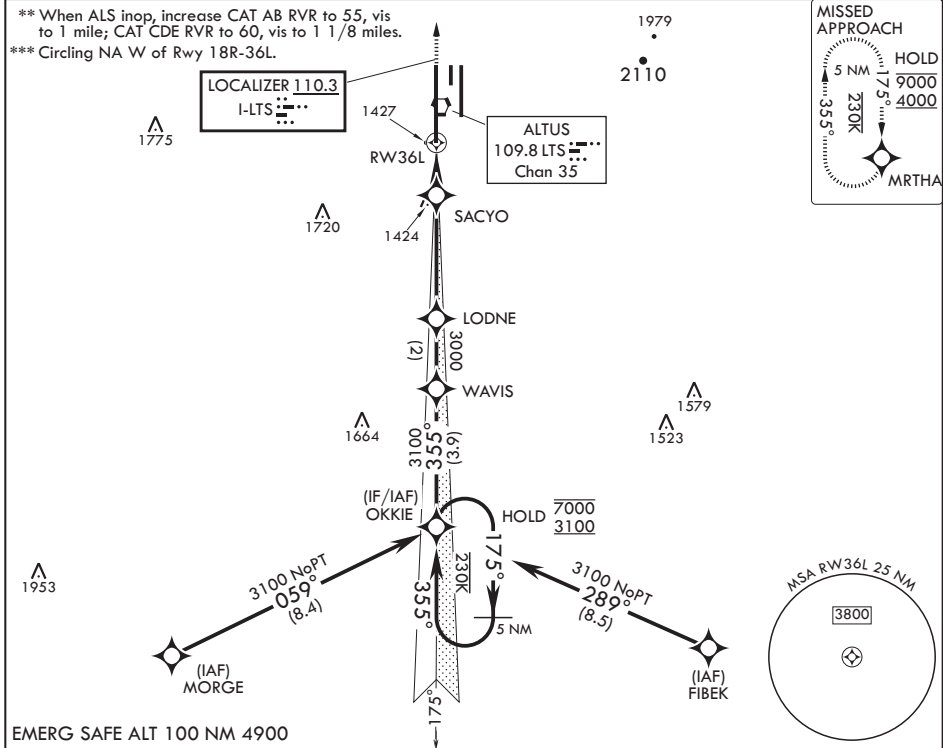
AL-482 (USAF)

ALTUS AFB (KLTS)

RNP APCH for LNAV	ALS-F1	MISSED APPROACH: Climb to 4000 direct MRTHA and hold.
RNAV1-GPS required for ILS.		
<p>⚠ * When ALS inop, increase CAT ABCDE RVR to 40, vis to 3/4 mile; RVR 18 authorized with use of FD or AP or HUD to DA.</p>		

ATIS* 109.8 273.5	FORT WORTH CENTER 133.5 350.35	APP CON 125.1 353.7	TOWER* 119.65 254.4	GND CON 121.85 275.8	CLNC DEL 120.65 284.7
-----------------------------	--	-------------------------------	-------------------------------	--------------------------------	---------------------------------

** When ALS inop, increase CAT AB RVR to 55, vis to 1 mile; CAT CDE RVR to 60, vis to 1 1/8 miles.
 *** Circling NA W of Rwy 18R-36L.



EMERG SAFE ALT 100 NM 4900

<p>OKKIE (12) WAVIS LODNE SACYO VORTAC RW36L</p> <p>7000 3100 175° 355° 3100 3000 1800 1 NM to RW 36L</p> <p>GS 3.00° TCH 55</p>		<p>4000 MRTHA</p> <p>ELEV 1382 TDZE 1354</p>
<p>3100 NoPT (8.4) 3100 NoPT (8.5)</p> <p>355° 17.5° 5 NM</p> <p>3100 7000 3100</p>		
CATEGORY	A B C D E	
S-ILS 36L*	1554/24 200 (200-½)	
LNAV MDA**	1740/24 386 (400-½) 1740/35 386 (400-%)	
CIRCLING***	1780-1 398 (400-1) 1840-1 458 (500-1) 1880-1½ 498 (500-1½) 2080-2¼ 698 (700-2¼) 2180-2¾ 798 (800-2¾)	

ALTUS, OKLAHOMA

34°40'N - 99°16'W

ALTUS AFB (KLTS)

Amdt 3 14JUL22 TERPS

ILS or RNAV (GPS) Y RWY 36L

SC-1, 08 AUG 2024 to 05 SEP 2024

SC-1, 08 AUG 2024 to 05 SEP 2024