

OKKIE THREE DEPARTURE (RNAV) (OKKIE3•OKKIE)

ALTUS, OKLAHOMA

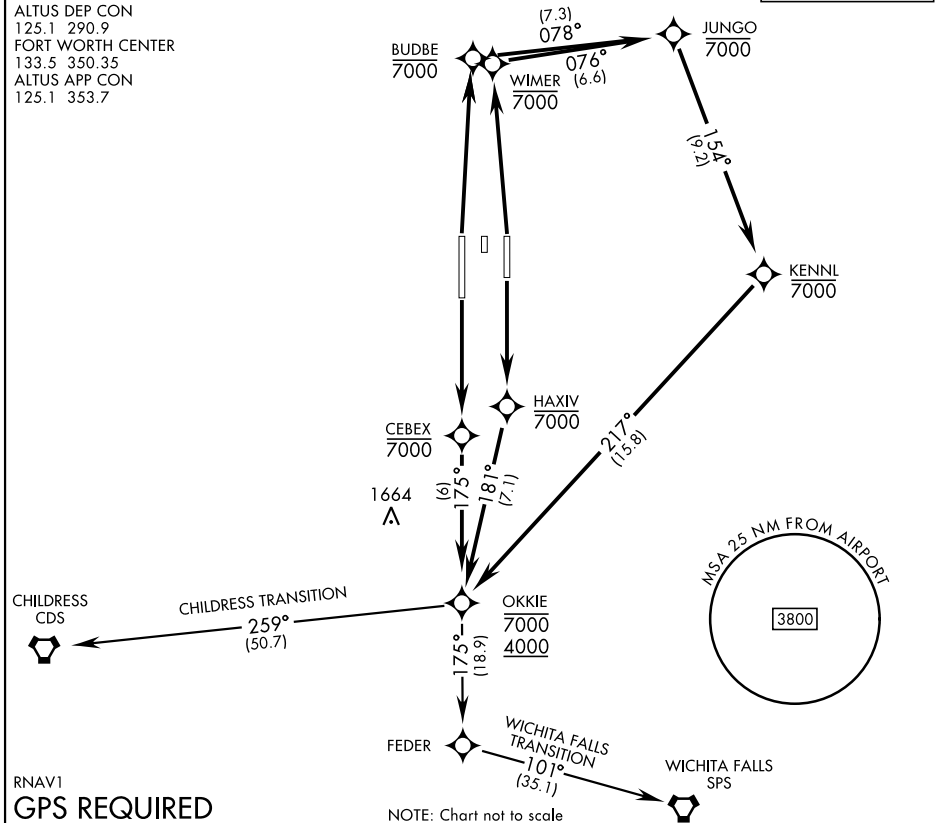
ATIS ★ 109.8 273.5
 CLNC DEL
 120.65 284.7
 GND CON
 121.85 275.8
 ALTUS TOWER ★
 119.65 254.4
 ALTUS DEP CON
 125.1 290.9
 FORT WORTH CENTER
 133.5 350.35
 ALTUS APP CON
 125.1 353.7

AL-482 [USAF]

Rwy	Knots	60	120	180	240	300	360
36L/R	V/V(fpm)	300	600	900	1200	1500	1800

Minimum Climb to 1900

TOP ALTITUDE:
9000



SC-1, 08 AUG 2024 to 05 SEP 2024

SC-1, 08 AUG 2024 to 05 SEP 2024

RNAV1
GPS REQUIRED

DEPARTURE ROUTE DESCRIPTION

- TAKEOFF RWY 18L:** Climb direct HAXIV, then on track 181° to OKKIE. Cross OKKIE between 4000 and 7000, thence...
 - TAKEOFF RWY 18R:** Climb direct CEBEX, then on track 175° to OKKIE. Cross OKKIE between 4000 and 7000, thence...
 - TAKEOFF RWY 36L:** Climb direct BUDBE, then on depicted route to OKKIE. Cross OKKIE between 4000 and 7000, thence...
 - TAKEOFF RWY 36R:** Climb direct WIMER, then on depicted route to OKKIE. Cross OKKIE between 4000 and 7000, thence...
- ...via transition or assigned route. Maintain 9000. Expect filed altitude 10 minutes after departure.
- CHILDRESS TRANSITION (OKKIE3-CDS):** From over OKKIE track 259° to CDS.
 - WICHITA FALLS TRANSITION (OKKIE3-SPS):** From over OKKIE track 175° to FEDER, then track 101° to SPS.

OKKIE THREE DEPARTURE (RNAV) (OKKIE3•OKKIE)

ALTUS, OKLAHOMA