

ALTUS, OKLAHOMA

# RNAV (GPS)-A

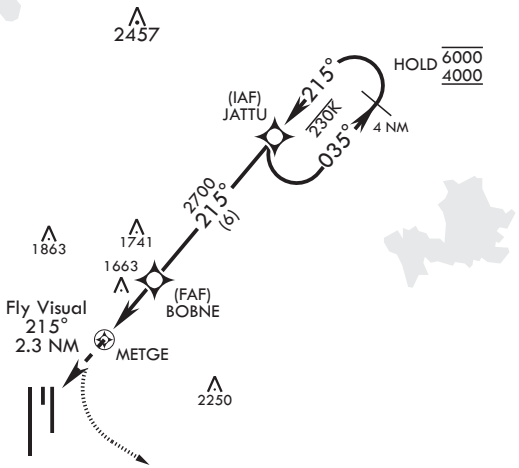
APCH CRS 215°	Rwy Idg TDZE Arpt Elev 1382	N/A N/A 1382
------------------	--------------------------------------	--------------------

AL-482 (USAF)

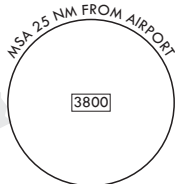
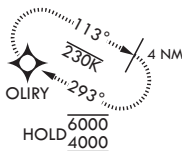
ALTUS AFB (KLTS)

RNP APCH. DME/DME RNP 0.3 NA	MISSED APPROACH: Climb to 2200, then climbing left turn to 4000 direct OLIRY and hold.
ATC RADAR REQUIRED	
◀ Circling NA W of Rwy 18R-36L	

ATIS* 109.8 273.5	FORT WORTH CENTER 133.5 350.35	APP CON 125.1 353.7	TOWER* 119.65 254.4	GND CON 121.85 275.8	CLNC DEL 120.65 284.7
----------------------	-----------------------------------	------------------------	------------------------	-------------------------	--------------------------

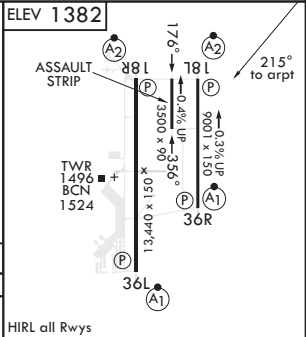
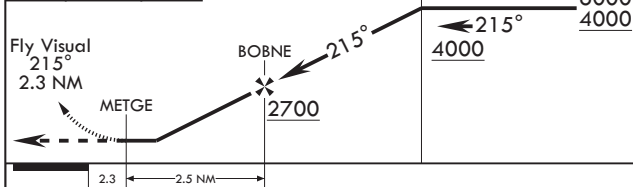


2409



## FOR USE BY 97 AMW ACFT ONLY

EMERG SAFE ALT 100 NM 4900



CATEGORY	A	B	C	D	E
◻ CIRCLING	NA			2080-3 698 (700-3)	2180-3 798 (800-3)

HIRL all Rwys

ALTUS, OKLAHOMA

34°40'N - 99°16'W

ALTUS AFB (KLTS)

Amdt 4 14JUL22  
TERPS

# RNAV (GPS)-A

SC-1, 08 AUG 2024 to 05 SEP 2024

SC-1, 08 AUG 2024 to 05 SEP 2024