

ALTUS, OKLAHOMA

23250

RNAV (RNP) Y RWY 36R

APCH CRS	Rwy Idg	9001
355°	TDZE	1361
	Arprt Elev	1382

AL-482 [USAF]

ALTUS AFB (KLTS)

RNP AR APCH

* When ALS inop, increase RVR to 40, vis to 3/4 mile.
 ** When ALS inop, increase RVR to 45, vis to 7/8 mile.

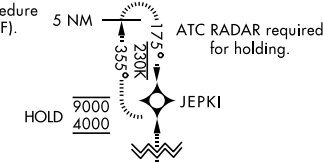


MISSED APPROACH: Climb to 4000 direct JEPKI and hold.

ATIS ★	FORT WORTH CENTER	APP CON	TOWER ★	GND CON	CLNC DEL
109.8 273.5	133.5 350.35	125.1 353.7	119.65 254.4	121.85 275.8	120.65 284.7

For uncompensated Baro-VNAV systems, procedure NA below -17°C (2°F) or above 54°C (130°F).

FOR USE BY 97 AMW ACFT ONLY



2083



(FAF) CINVA



(6)

355°

2900

7000

3100

175°

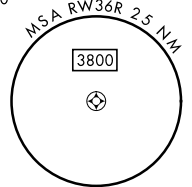
230K

355°

5 NM

1524

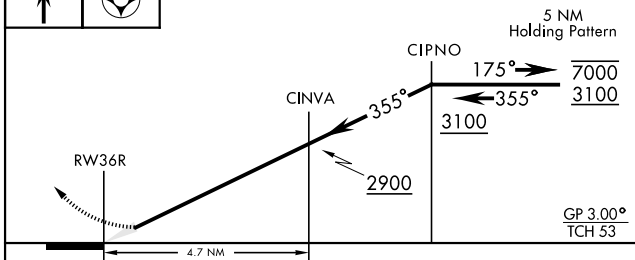
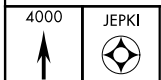
1790



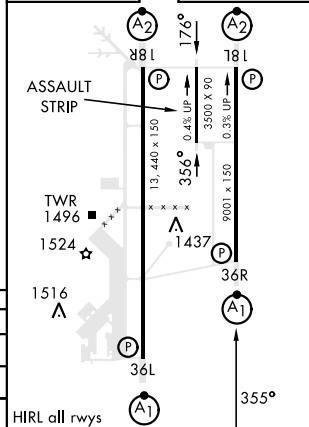
ATC RADAR required for holding above 4000.

AUTHORIZATION REQUIRED

EMERG SAFE ALT 100 NM 4900



ELEV	1382	TDZE	1361
------	------	------	------



CATEGORY	A	B	C	D
RNP 0.10 DA*	1611/24	250	(300-1/2)	
RNP 0.30 DA**	1672/24	311	(300-1/2)	
CIRCLING	NOT AUTHORIZED			

HIRL all rwys

355°

ALTUS, OKLAHOMA

34°40'N-99°16'W

ALTUS AFB (KLTS)

Amdt 3 07SEP23

RNAV (RNP) Y RWY 36R

SC-1, 08 AUG 2024 to 05 SEP 2024

SC-1, 08 AUG 2024 to 05 SEP 2024