

ALTUS, OKLAHOMA

RNAV (GPS) Z RWY 36R

APCH CRS	Rwy Idg	9001
355°	TDZE	1361
	Arprt Elev	1382

AL-482 (USAF)

ALTUS AFB (KLTS)

RNP APCH. DME/DME RNP-0.3 NA

ALSF-1

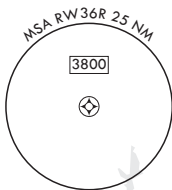
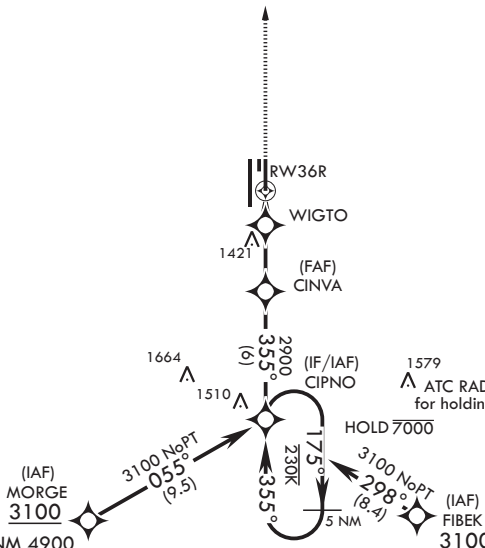
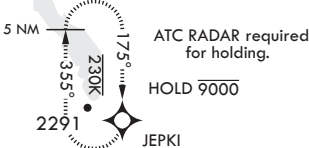
MISSED APPROACH: Climb to 4000 direct JEPKI and hold.

* When ALS inop increase RVR to 40, vis to 3/4 mile.
 ** When ALS inop increase CAT AB RVR to 35, vis to 1 mile; CAT CDE RVR 50, vis to 1 mile.

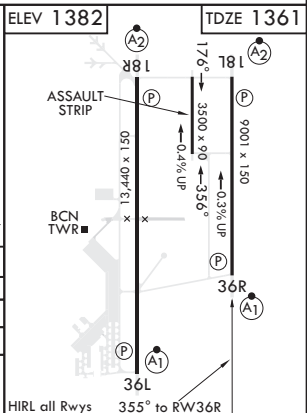
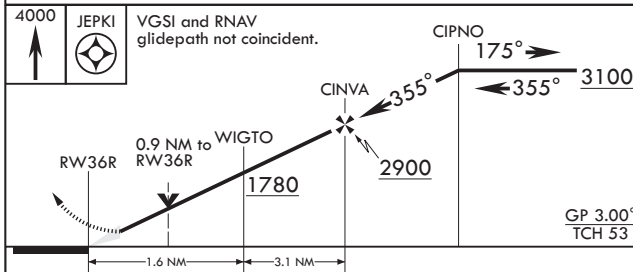
ATIS*	FORT WORTH CENTER	APP CON	TOWER*	GND CON	CLNC DEL
109.8 273.5	133.5 350.35	125.1 353.7	119.65 254.4	121.85 275.8	120.65 284.7

*** Circling NA W of Rwy 36L-18R.

For uncompensated Baro-VNAV systems, procedure NA below -17°C (2°F) or above 54°C (130°F).



EMERG SAFE ALT 100 NM 4900



CATEGORY	A	B	C	D	E
LNAV/VNAV DA*	1611/24		250	(300-1/2)	
LNAV MDA**	1700/24	339 (400-1/2)	1700/26	339	(400-1/2)
C CIRCLING***	1780-1 398 (400-1)	1840-1 458 (500-1)	1880-1 1/2 498 (500-1 1/2)	2080-2 1/4 698 (700-2 1/4)	2180-2 3/4 798 (800-2 3/4)

ALTUS, OKLAHOMA

34°40'N - 99°16'W

ALTUS AFB (KLTS)

Amdt 3 14JUL22

RNAV (GPS) Z RWY 36R

SC-1, 08 AUG 2024 to 05 SEP 2024

SC-1, 08 AUG 2024 to 05 SEP 2024