

ALTUS, OKLAHOMA

VOR or TACAN-C

VORTAC LTS 109.8 Chan 35	APCH CRS 215°	Rwy Idg TDZE Arprt Elev N/A N/A 1382
--	-------------------------	--

AL-482 [USAF]

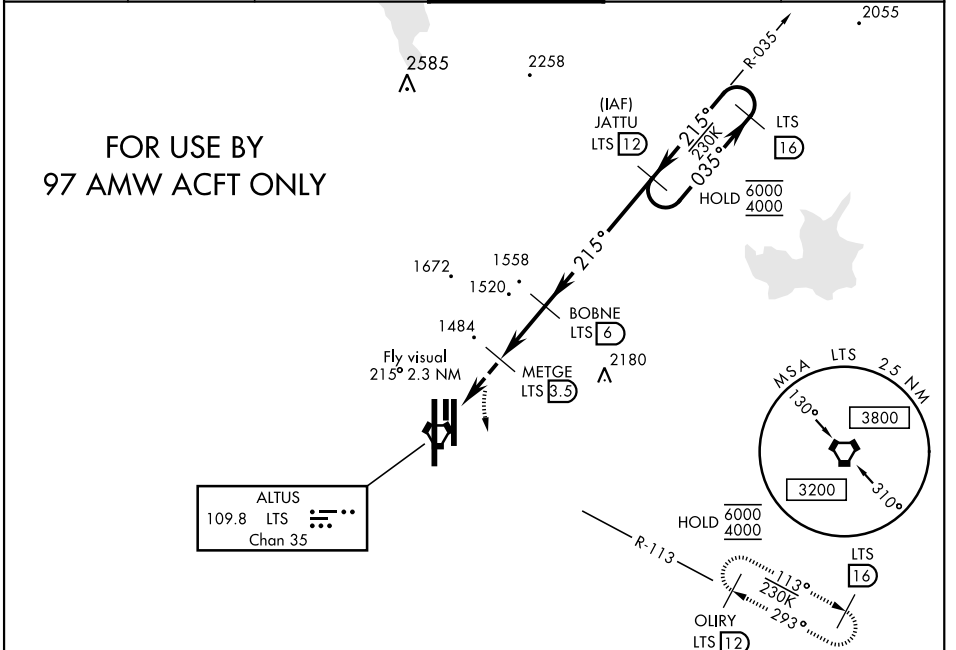
ALTUS AFB (KLTS)

RADAR, DME required.	MISSED APPROACH: Climb to 2300, then climbing left turn to 4000 intercept LTS R-113 to OLIRY and hold.
----------------------	--

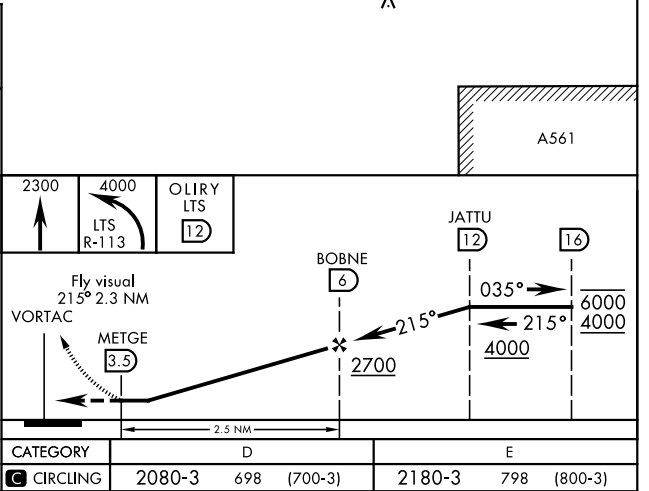
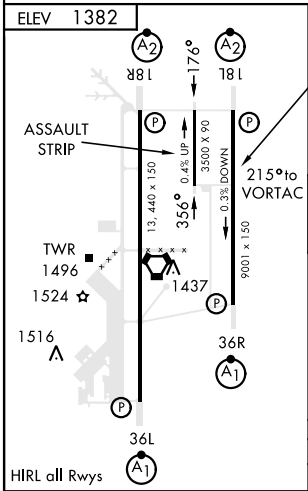
ATIS ★ 109.8 273.5	FORT WORTH CENTER 133.5 350.35	APP CON 125.1 353.7	TOWER ★ 119.65 254.4	GND CON 121.85 275.8	CLNC DEL 120.65 284.7
------------------------------	--	-------------------------------	--------------------------------	--------------------------------	---------------------------------

FOR USE BY 97 AMW ACFT ONLY

ALTUS
109.8 LTS
Chan 35



EMERG SAFE ALT 100 NM 4900



ALTUS, OKLAHOMA
Amdt 3 14JUL22

34°40'N-99°16'W

ALTUS AFB (KLTS)

VOR or TACAN-C

SC-1, 08 AUG 2024 TO 05 SEP 2024

SC-1, 08 AUG 2024 TO 05 SEP 2024