

ALTUS, OKLAHOMA

# VOR or TACAN-D

VORTAC LTS <b>109.8</b> Chan <b>35</b>	APCH CRS <b>293°</b>	Rwy Idg TDZE Arprt Elev <b>N/A</b> <b>N/A</b> <b>1382</b>
--	-------------------------	--

AL-482 [USAF]

ALTUS AFB (KLTS)

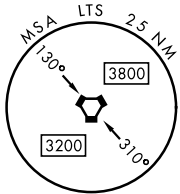
RADAR, DME required.

MISSED APPROACH: Climb to 2200, then climbing right turn to 4000, intercept LTS R-035 to JATTU and hold.

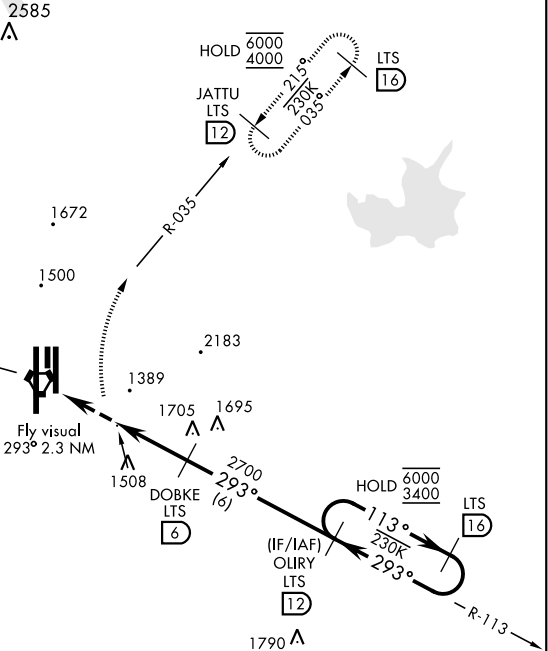
ATIS ★ <b>109.8 273.5</b>	FORT WORTH CENTER <b>133.5 350.35</b>	APP CON <b>125.1 353.7</b>	TOWER ★ <b>119.65 254.4</b>	GND CON <b>121.85 275.8</b>	CLNC DEL <b>120.65 284.7</b>
------------------------------	--	-------------------------------	--------------------------------	--------------------------------	---------------------------------

2055

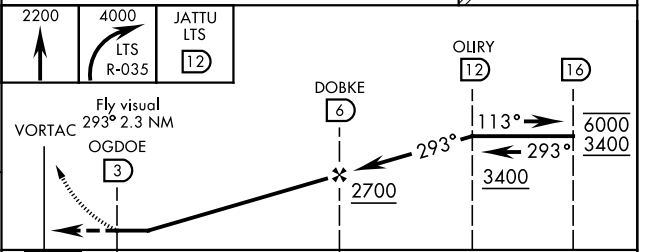
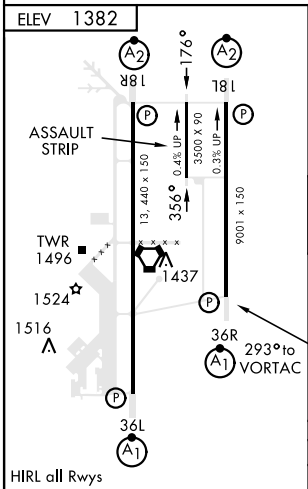
## FOR USE BY 97 AMW ACFT ONLY



ALTUS  
109.8 LTS  
Chan 35



EMERG SAFE ALT 100 NM 4900



CATEGORY	D	E
<input checked="" type="checkbox"/> CIRCLING	2080-3 698 (700-3)	2180-3 798 (800-3)

ALTUS, OKLAHOMA

34°40'N-99°16'W

ALTUS AFB (KLTS)

Amdt 3 14JUL22

# VOR or TACAN-D

SC-1, 08 AUG 2024 TO 05 SEP 2024

SC-1, 08 AUG 2024 TO 05 SEP 2024