

HEEDS THREE DEPARTURE (HEEDS3•HEEDS)

YUMA MCAS/YUMA INTL (KNYL)

ATIS ★
 118.8 273.5
 CLNC DEL
 118.0 336.4
 GND CON
 121.9 314.0
 YUMA TOWER ★
 119.3 377.075
 YUMA DEP CON
 125.55 282.325

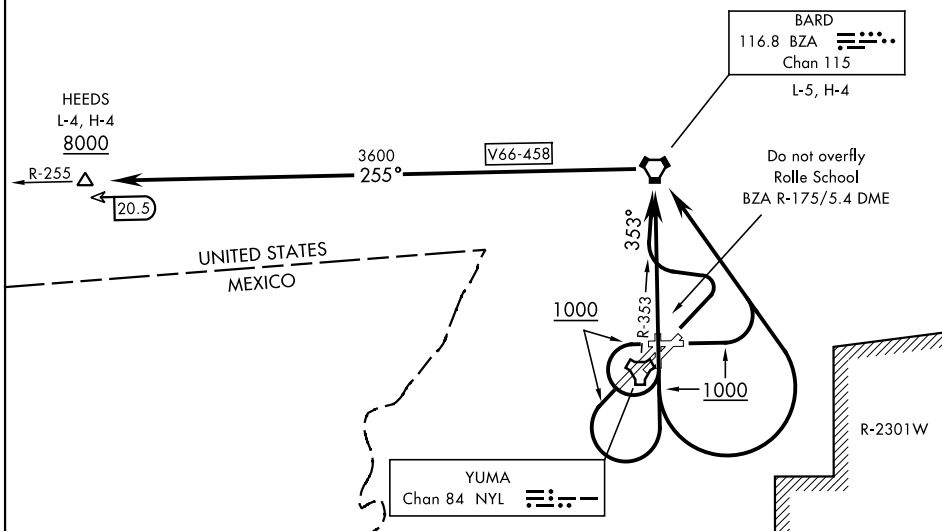
△
2663

Rwy	Knots	60	120	180	240	300	360
†3L/R	V/V(fpm)	313	626	939	1252	1565	1878
†8, 17, 21L/R, 26	V/V(fpm)	291	582	873	1164	1455	1746
†35	V/V(fpm)	328	656	984	1312	1640	1968
*3R	V/V(fpm)	205	410	615	820	1025	1230

† ATC Climb Rate to 8000
 * Minimum Climb Rate to 700

Runway 3L/R: Do not exceed 250 KIAS until intercepting NYL R-353. Cross BZA VORTAC at or below 9000.
 Runway 8: Do not exceed 270 KIAS until 1000.
 Runway 35: Cross BZA VORTAC at or below 14,000.

SW-4, 08 AUG 2024 to 05 SEP 2024



SW-4, 08 AUG 2024 to 05 SEP 2024

DEPARTURE ROUTE DESCRIPTION

TAKE-OFF RWY 3L/R: Climbing left turn to 8000 to intercept NYL TACAN R-353 to BZA VORTAC and via BZA R-255 to HEEDS. Do not exceed 250 KIAS until intercepting NYL R-353. Cross BZA VORTAC at or below 9000. Cross HEEDS at or above 8000.

TAKE-OFF RWY 8: Climb to 1000, then climbing left turn direct BZA VORTAC, then via BZA R-255 to HEEDS. Do not exceed 270 KIAS until 1000. Cross HEEDS at or above 8000.

TAKE-OFF RWY 17, 21L/R, 26: Climb to 1000, then climbing left turn direct BZA VORTAC, then via BZA R-255 to HEEDS. Cross HEEDS at or above 8000.

TAKE-OFF RWY 35: Climb to 8000 direct BZA VORTAC and via BZA R-255 to HEEDS. Cross BZA VORTAC at or below 14,000. Cross HEEDS at or above 8000.

Then via assigned route. Maintain assigned altitude. Expect clearance to filed altitude 10 minutes after departure.

HEEDS THREE DEPARTURE (HEEDS3•HEEDS)

Orig 22APR21

YUMA, ARIZONA
YUMA MCAS/YUMA INTL (KNYL)