

CLOVIS, NEW MEXICO

RNAV (GPS) RWY 22

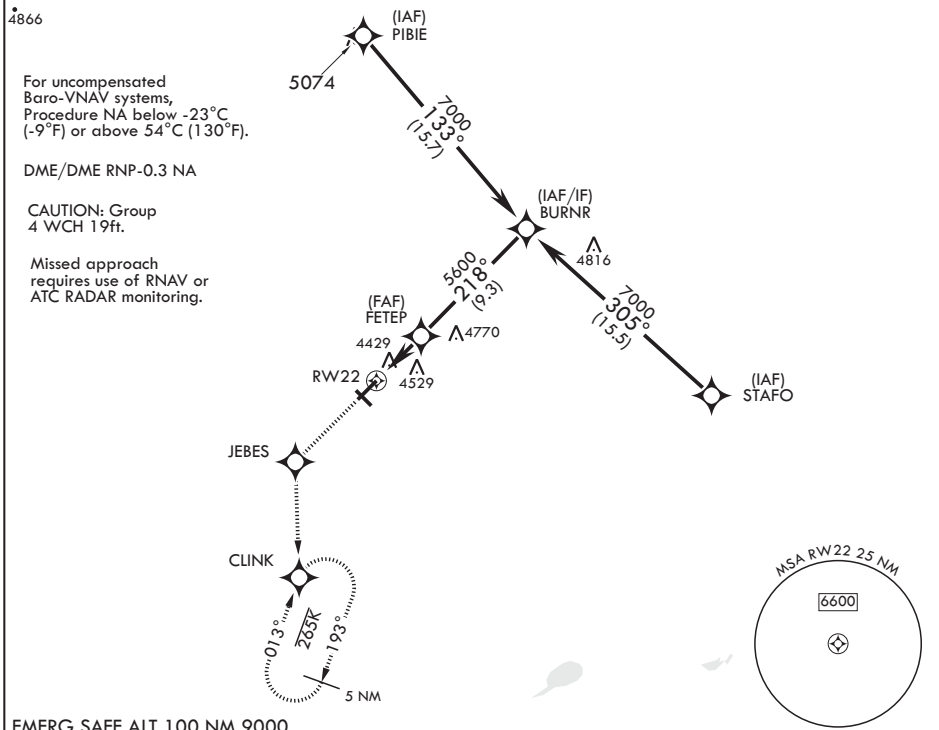
WAAS CH 41173 W22A	APCH CRS 218°	Rwy ldg TDZE 4295	10,003 4295 4295
--------------------------	------------------	-------------------------	------------------------

AL-512 (USAF)

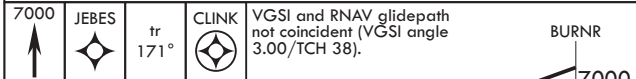
CANNON AFB (KCVS)

<p>▼ * When ALS inop, increase RVR to 40, vis to 3/4 mile. ** When ALS inop, increase vis to 1 1/4 miles. *** When ALS inop, increase CAT AB RVR to 55, vis to 1 mile; CAT CDE vis to 1 1/4 miles.</p>	<p>ALSF-1</p>	<p>MISSED APPROACH: Climb to 7000 direct JEBES, track 171° to CLINK and hold.</p>
--	---------------	---

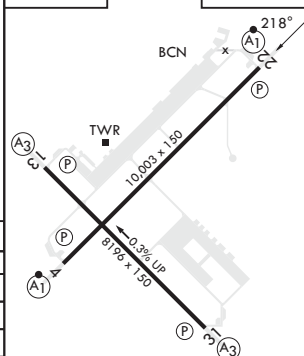
ATIS 119.1 269.9	CANNON APP CON 118.425 352.1	TOWER 120.4 270.25	GND CON 121.9 275.8	CLNC DEL 120.2 293.225
---------------------	---------------------------------	-----------------------	------------------------	---------------------------



EMERG SAFE ALT 100 NM 9000



ELEV 4295	TDZE 4295
-----------	-----------



CATEGORY	A	B	C	D	E
LPV DA*	4495/24		200	(200-1/2)	
LNAV/VNAV DA**	4720/40		425	(500-3/4)	
LNAV MDA***	4720/24	425 (500-1/2)	4720/40	425	(500-3/4)

CIRCLING	4840-1 545 (600-1)	4860-1 1/2	5000-2 1/4	5020-2 1/2
		565 (600-1 1/2)	705 (800-2 1/4)	725 (800-2 1/2)

HIRL all Rwys

CLOVIS, NEW MEXICO

34°23'N - 103°19'W

CANNON AFB (KCVS)

Amdt 6 16JUL20

RNAV (GPS) RWY 22

SW-1, 08 AUG 2024 to 05 SEP 2024

SW-1, 08 AUG 2024 to 05 SEP 2024