

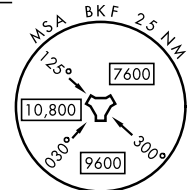
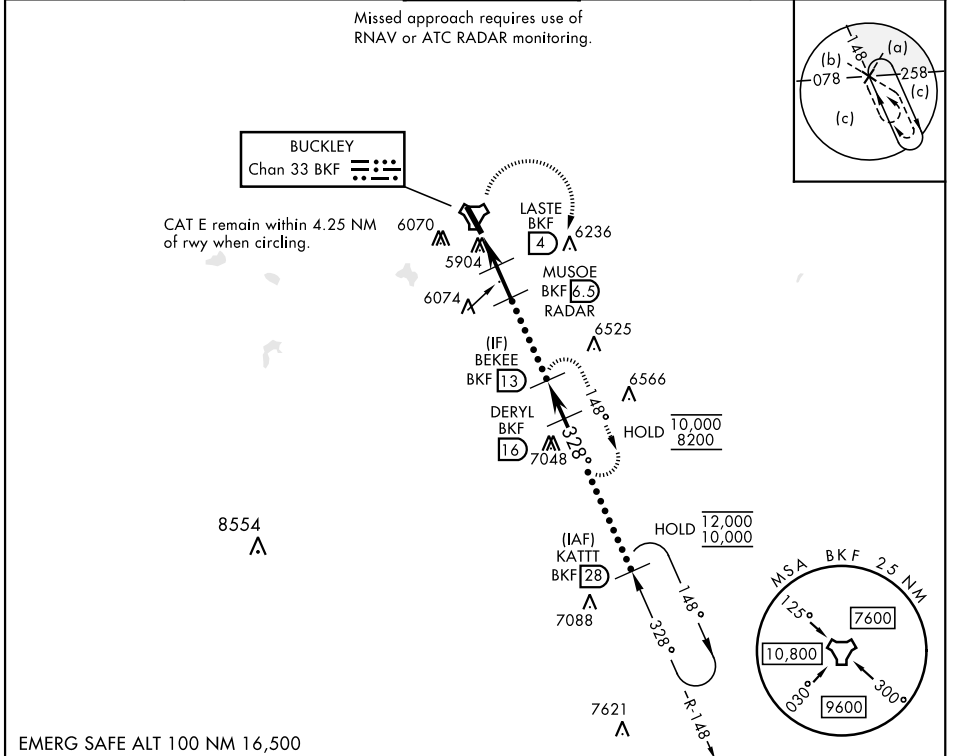
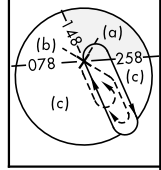
HI-TACAN RWY 32

TACAN BKF Chan 33	APCH CRS 328°	Rwy Idg 11,006 TDZE 5663 Arprt Elev 5663	AL-538 [USAF]	BUCKLEY SFB (KBKF)
-----------------------------	-------------------------	---	---------------	--------------------

A1
ALSF-1
MISSED APPROACH: Climbing right turn to 8200 and intercept BKF TACAN R-148 direct BEKEE and hold or as directed by ATC.

ATIS ★ 119.675 259.3	DENVER APP CON 128.45 251.075	TOWER ★ 121.0 291.675	GND CON 121.6 275.8	CLNC DEL 121.6 275.8
--------------------------------	---	---------------------------------	-------------------------------	--------------------------------

Missed approach requires use of RNAV or ATC RADAR monitoring.



EMERG SAFE ALT 100 NM 16,500

8200 BKF R-148	BEKEE BKF 13	ELEV 5663	TDZE 5663
CATEGORY	C	D	E
S-32 *	6280-1 ³ / ₈ 617 (700-1 ³ / ₈)		
CIRCLING **	6360-2 697 (700-2)	6400-2 ¹ / ₄ 737 (800-2 ¹ / ₄)	6420-2 ³ / ₄ 757 (800-2 ³ / ₄)
AURORA, COLORADO		BUCKLEY SFB (KBKF)	

AURORA, COLORADO 39°42'N-104°45'W BUCKLEY SFB (KBKF)

HI-TACAN RWY 32



SW-1, 08 AUG 2024 to 05 SEP 2024

SW-1, 08 AUG 2024 to 05 SEP 2024