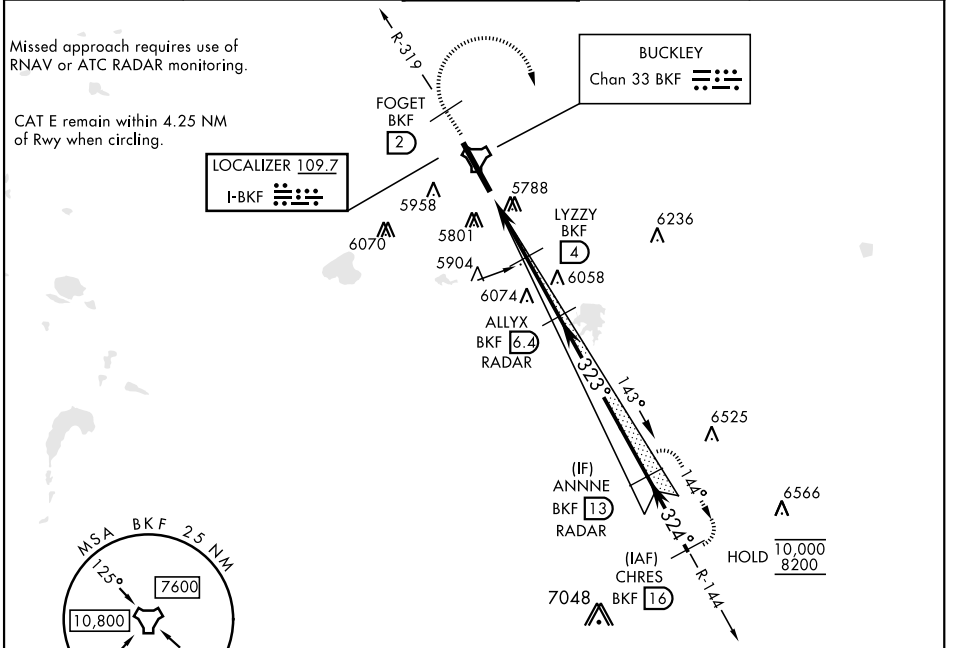


LOC I-BKF 109.7	APCH CRS 323°	Rwy Ldg 11,006 TDZE 5663 Arprt Elev 5663	AL-538 [USAF]	BUCKLEY SFB (KBKF)
---------------------------	-------------------------	---	---------------	--------------------

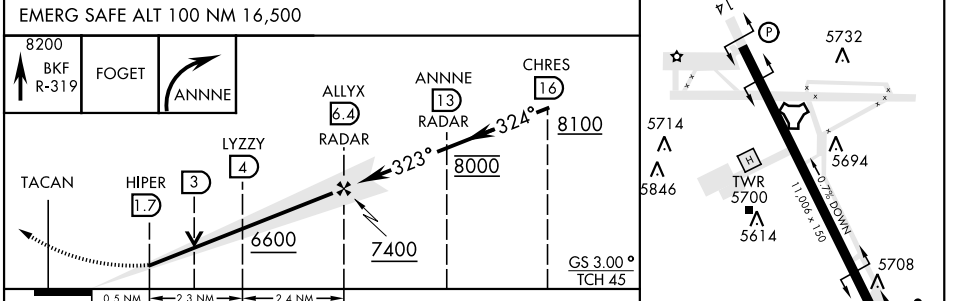
▼ * When ALS inop, increase RVR to 40 and vis to ¾ miles.
 ** When ALS inop, increase CAT AB RVR to 55 and vis to 1 mile, CAT CDE vis to 1 ¾ miles.
 *** Circling NA East of Rwy 14-32.

ALSF-1 MISSED APPROACH: Climb on BKF TACAN R-319 to FOGET, then climbing right turn to 8200 and intercept BKF R-144 to ANNNE and hold or as directed by ATC.

ATIS ★ 119.675 259.3	DENVER APP CON 128.45 251.075	TOWER ★ 121.0 291.675	GND CON 121.6 275.8	CLNC DEL 121.6 275.8
--------------------------------	---	---------------------------------	-------------------------------	--------------------------------



ELEV 5663	TDZE 5663
-----------	-----------



CATEGORY	A	B	C	D	E
S-ILS 32 *	5863/24		200 (200-½)		
S-LOC 32 **	6280/24 617 (700-½)		6280-1¾ 617 (700-1¾)	617 (700-1¾)	
CIRCLING ***	6280-1 617 (700-1)		6360-2 697 (700-2)	6400-2¼ 737 (800-2¼)	6420-2¾ 757 (800-2¾)

HIRL Rwy 14-32
REIL Rwy 14

SW-1, 08 AUG 2024 to 05 SEP 2024

SW-1, 08 AUG 2024 to 05 SEP 2024