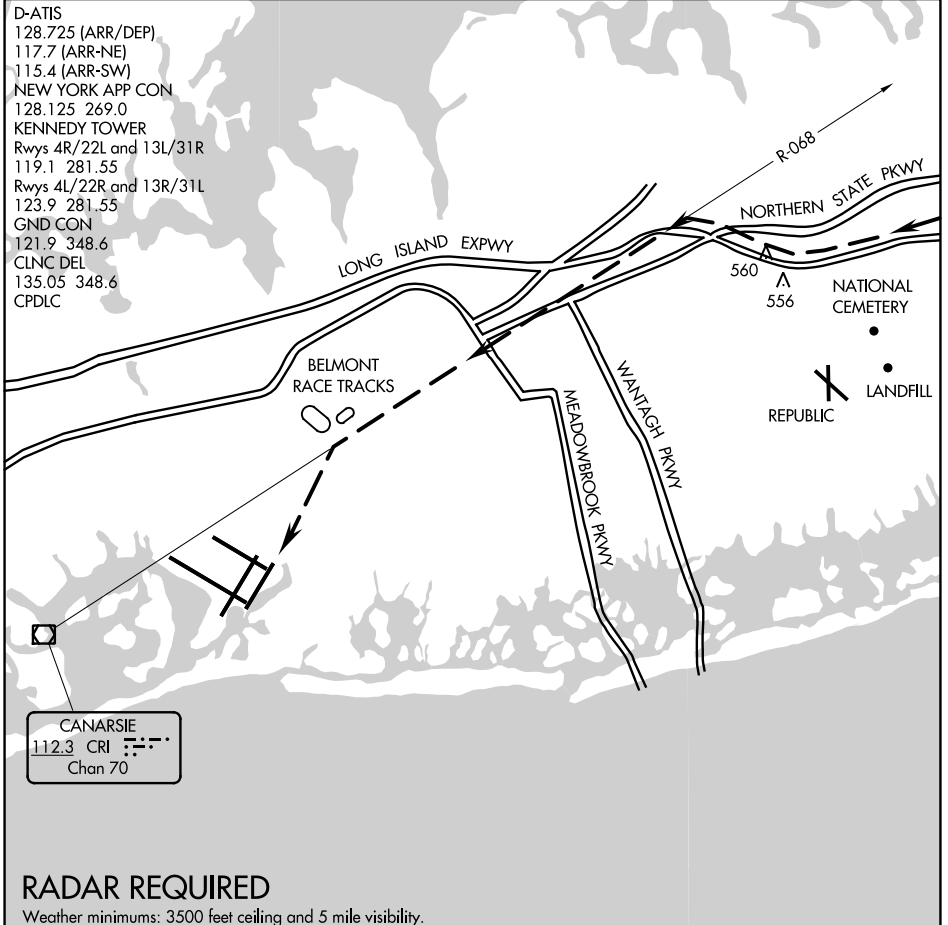


BELMONT VISUAL RWY 22L

D-ATIS
 128.725 (ARR/DEP)
 117.7 (ARR-NE)
 115.4 (ARR-SW)
 NEW YORK APP CON
 128.125 269.0
 KENNEDY TOWER
 Rwys 4R/22L and 13L/31R
 119.1 281.55
 Rwys 4L/22R and 13R/31L
 123.9 281.55
 GND CON
 121.9 348.6
 CLNC DEL
 135.05 348.6
 CPDLC



NE-2, 08 AUG 2024 to 05 SEP 2024

NE-2, 08 AUG 2024 to 05 SEP 2024

RADAR REQUIRED

Weather minimums: 3500 feet ceiling and 5 mile visibility.

NM	1	2	3	4	5	6	7	8	9	10	11	12	13	14	15	16	17	18	19	20	21	22	23	24	25
----	---	---	---	---	---	---	---	---	---	----	----	----	----	----	----	----	----	----	----	----	----	----	----	----	----

BELMONT VISUAL RUNWAY 22L

When cleared for the Belmont Visual Approach to Runway 22L, follow the Long Island Expressway westbound until intercepting CRI R-068 at 3000'. Navigate on CRI R-068 till abeam Belmont Race Track at 1600'. Remain east of Belmont Race Track and proceed direct to JFK Runway 22L.

BELMONT VISUAL RWY 22L

40°38'N-73°47'W

NEW YORK, NEW YORK
JOHN F KENNEDY INTL (JFK)