

LOC/DME I-HI-Q 110.9 Chan 46	APP CRS 044°	Rwy Idg 11010 TDZE 13 Apt Elev 13
--	------------------------	--

ILS or LOC RWY 4L

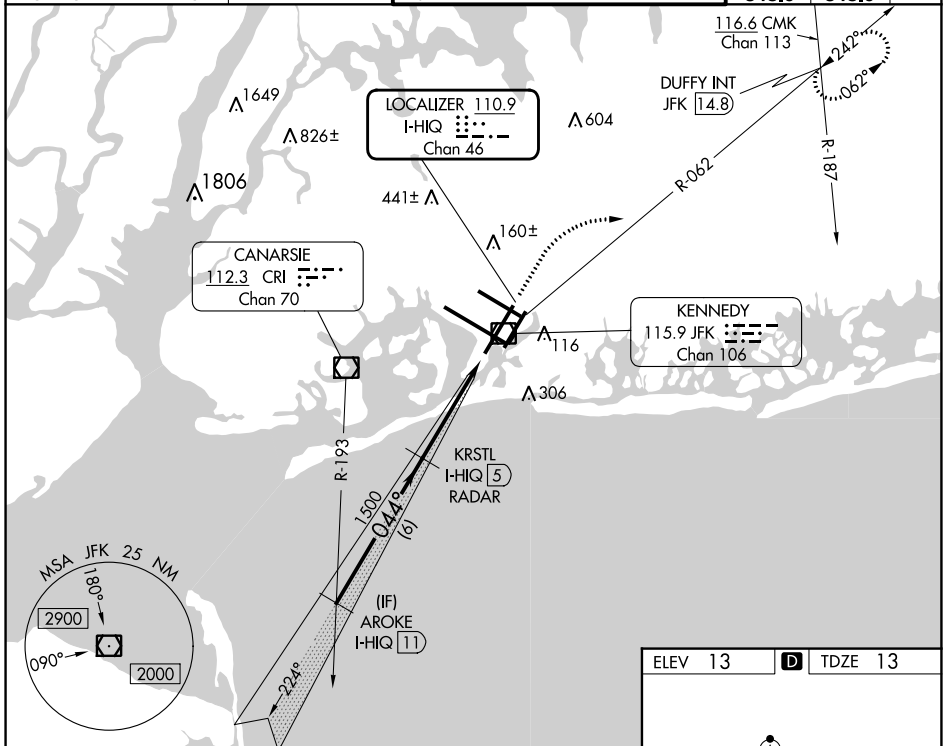
JOHN F KENNEDY INTL (JFK)

RADAR required for procedure entry. DME or RADAR required for LOC only.

MISSED APPROACH: Climb to 2000 then climbing right turn to 3000 on JFK VOR/DME R-062 to DUFFY INT/JFK 14.8 DME and hold.

Simultaneous approach authorized.
Autopilot coupled approach NA below 200 feet MSL.

D-ATIS (ARR/DEP) (ARR-NE) (ARR-SW) 128.725 117.7 115.4	NEW YORK APP CON 128.125 269.0	KENNEDY TOWER Rwys 4R/22L and 13L/31R 119.1 281.55 Rwys 4L/22R and 13R/31L 123.9 281.55	GND CON 121.9 348.6	CLNC DEL 135.05 348.6	CPDLC
---	--	---	-------------------------------	---------------------------------	-------



NE-2, 08 AUG 2024 to 05 SEP 2024

NE-2, 08 AUG 2024 to 05 SEP 2024

VGSI and ILS glidepath not coincident (VGSI Angle 3.00/TCH 75).

AROKE I-HI-Q (11)	KRSTL I-HI-Q (5) RADAR	I-HI-Q (1.6)	I-HI-Q (0.5)
2000	1500	1500	2000
GS 3.00° TCH 57	044°		
6 NM	3.3 NM	1.2 NM	

CATEGORY	A	B	C	D
S-ILS 4L		231/40	218 (300-3/4)	
S-LOC 4L	460/55	447 (500-1)	460-1 3/8	447 (500-1 3/8)
C CIRCLING	640-1	627 (700-1)	700-2 687 (700-2)	700-2 1/4 687 (700-2 1/4)

