

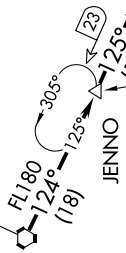
LENDY EIGHT ARRIVAL

NEW YORK, NEW YORK

NE-2, 08 AUG 2024 to 05 SEP 2024

NEW YORK APP CON
 128.125 269.0
 FRG ATIS
 126.65
 JFK D-ATIS
 128.725 (ARR/DEP)
 117.7 (ARR-NE)
 115.4 (ARR-SW)

WILKES-BARRE
 111.6 LVZ
 Chan 53



JENNO
 Expect FL230

HARTY
 Expect FL305

STILLWATER
 109.6 STW
 Chan 33

FL180
 109°
 (34)

LA GUARDIA
 113.1 LGA
 Chan 78

NOTE: STAR applicable to Turbojet and Turboprop aircraft capable of operating at 250K or greater at FL190.
 NOTE: DME required.
 NOTE: RADAR required.

LENDY TURBOJET VERTICAL NAVIGATION PLANNING INFORMATION

Expect FL190 and 250K

3000
 133°
 (14) R-315



REPUBLIC



JOHN F KENNEDY INTL

NOTE: Chart not to scale.

ARRIVAL ROUTE DESCRIPTION

From over LVZ VORTAC on LVZ R-124 to JENNO INT, then on STW R-305 to HARTY INT, then on STW R-305 to STW VOR/DME, then on STW R-109 to LENDY, then on LGA R-315 to LGA VOR/DME. Expect RADAR vectors to final approach course after LGA VOR/DME.

LENDY EIGHT ARRIVAL

NEW YORK, NEW YORK

NE-2, 08 AUG 2024 to 05 SEP 2024