

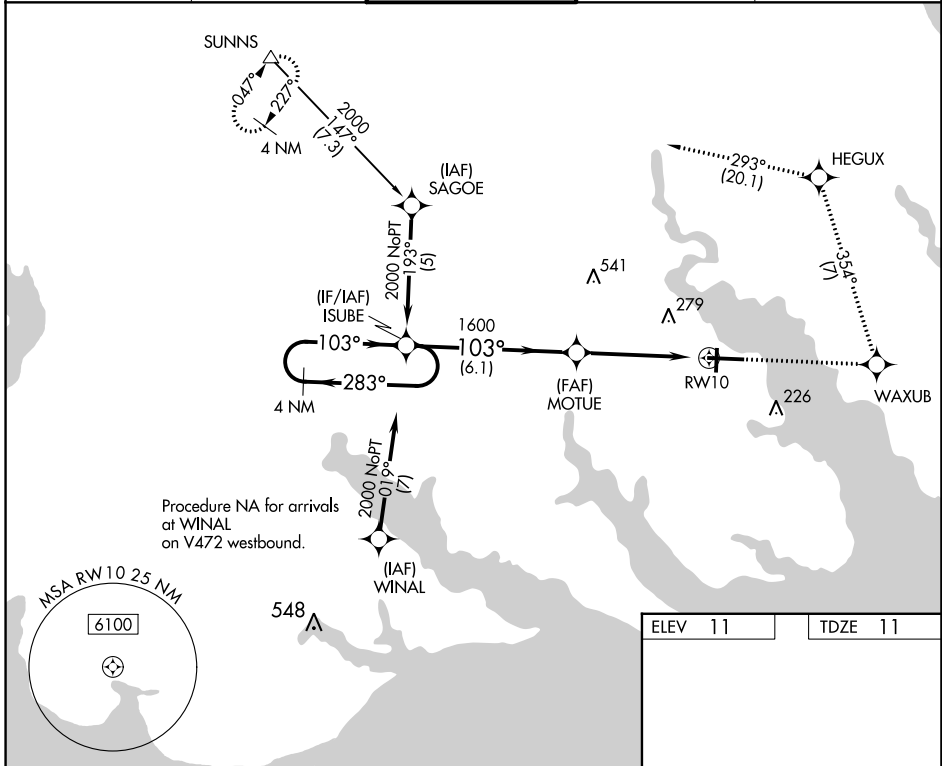
WAAS CH <b>65703</b> <b>W10A</b>	APP CRS <b>103°</b>	Rwy Idg TDZE Apt Elev	<b>7219</b> <b>11</b> <b>11</b>
--	------------------------	-----------------------------	---------------------------------------

# RNAV (GPS) RWY 10

ELIZABETH CITY CG AIR STATION/RGNL (ECG)

RNP APCH. ▼ Procedure NA when tethered balloon located approximately 2 miles southeast of airport is flying.	SALS A2	MISSED APPROACH: Climb to 2000 direct WAXUB and left turn on track 354° to HEGUX and 2000 on track 293° to SUNNS and hold.
---	------------	--

ASOS <b>124.375</b>	NORFOLK APP CON <b>119.55 269.425</b>	ELIZABETH CITY TOWER★ <b>120.5 (CTAF) 355.6</b>	GND CON <b>121.9</b>	UNICOM <b>122.95</b>
------------------------	--	--	-------------------------	-------------------------

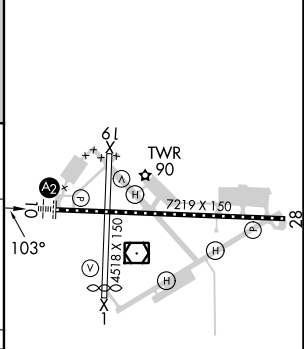
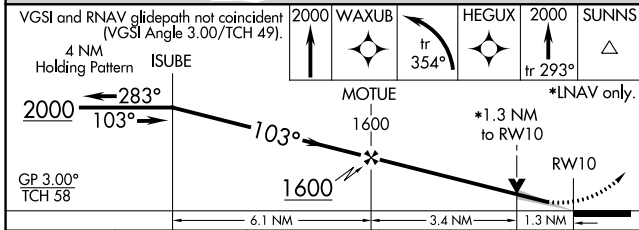


Procedure NA for arrivals at WINAL on V472 westbound.

SE-2, 08 AUG 2024 to 05 SEP 2024

SE-2, 08 AUG 2024 to 05 SEP 2024

ELEV 11	TDZE 11
---------	---------



CATEGORY	A	B	C	D
	LPV DA	261-3/4	250 (300-3/4)	
LNNAV MDA	460-1	449 (500-1)	460-1 3/8	449 (500-1 3/8)
CIRCLING	480-1	469 (500-1)	640-1 3/4	640-2
			629 (700-1 3/4)	629 (700-2)

MIRL Rwy 1-19  
HIRL Rwy 10-28  
REIL Rws 10 and 28