

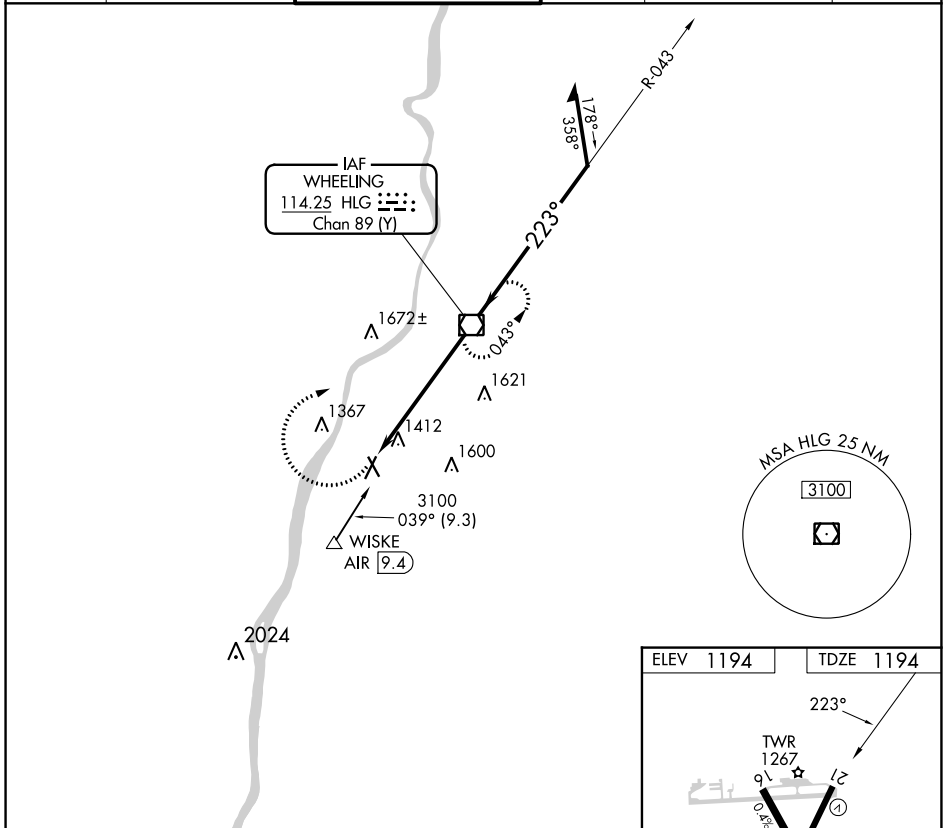
VOR/DME HLG 114.25 Chan 89 (Y)	APP CRS 223°	Rwy Idg TDZE Apt Elev	5002 1194 1194
--	------------------------	-----------------------------	---

VOR RWY 21

WHEELING OHIO COUNTY (HLG)

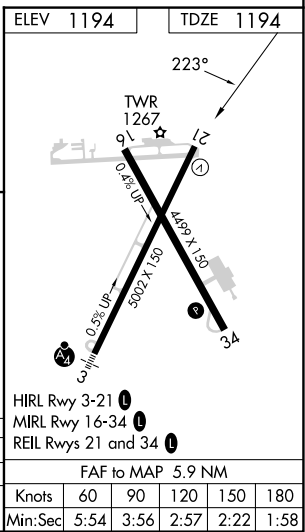
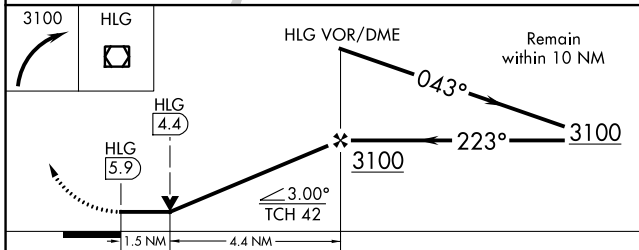
<p>▽ Rwy 21 helicopter visibility reduction below RVR 4000 NA.</p>	<p>MISSED APPROACH: Climbing right turn to 3100 direct HLG VOR/DME and hold.</p>
---	--

ASOS 127.375	PITTSBURGH APP CON 125.275 285.575	WHEELING TOWER ★ 118.1 (CTAF) 257.8	GND CON 121.75	CLNC DEL 125.275 (when twr closed)	UNICOM 122.95
------------------------	--	---	--------------------------	---	-------------------------



NE-4, 08 AUG 2024 to 05 SEP 2024

NE-4, 08 AUG 2024 to 05 SEP 2024



CATEGORY	A	B	C	D
S-21	1700/55	506 (600-1)	1700-1 ³ / ₈	506 (600-1 ³ / ₈)
CIRCLING	1720-1 526 (600-1)	1740-1 546 (600-1)	1920-2 726 (800-2)	1920-2 ¹ / ₄ 726 (800-2 ¹ / ₄)