

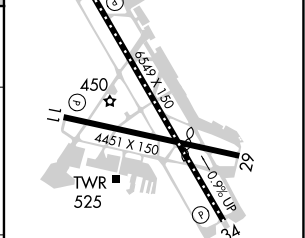
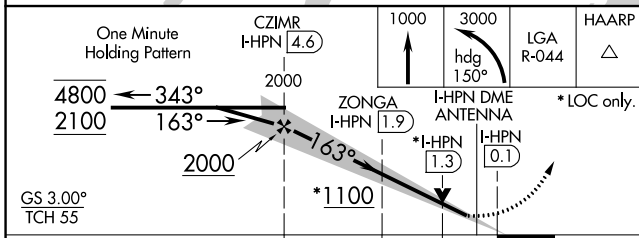
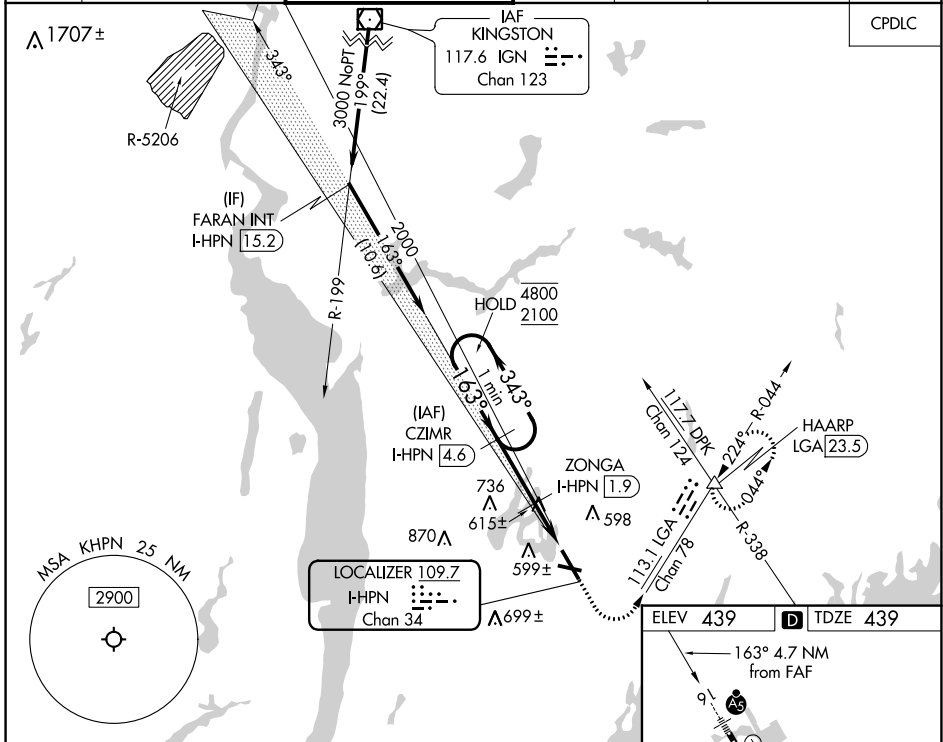
LOC/DME I-HPN 109.7 Chan 34	APP CRS 163°	Rwy Idg 6549 TDZE 439 Apt Elev 439
---	------------------------	---

ILS or LOC RWY 16

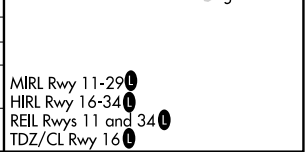
WESTCHESTER COUNTY (HPN)

DME required for LOC only.		MALSRL	MISSED APPROACH: Climb to 1000 then climbing left turn to 3000 on heading 150° and LGA VOR/DME R-044 to HAARP INT/LGA 23.5 DME and hold, continue climb-in-hold to 3000.
▽	Circling Rwy 11, 29 NA at night. For inop ALS, increase S-LOC 16 Cats C/D visibility to 1 3/8 SM.	AS	

D-ATIS 133.8	NEW YORK APP CON 120.8 126.4 257.65	WESTCHESTER TOWER ★ 118.575 (CTAF) 0 284.65	GND CON 121.825	CLNC DEL 127.25	CLNC DEL 126.4 (when twr closed)	UNICOM 122.95
------------------------	---	--	---------------------------	---------------------------	---	-------------------------



CATEGORY	A	B	C	D
S-ILS 16		639/18	200 (200-1/2)	
S-LOC 16	940/24	501 (600-1/2)	940/55	501 (600-1)
C CIRCLING	980-1	541 (600-1)	1080-1 3/4 641 (700-1 3/4)	1200-2 1/2 761 (800-2 1/2)



NE-2, 08 AUG 2024 to 05 SEP 2024

NE-2, 08 AUG 2024 to 05 SEP 2024